



Rice sector and trade News



Year 16°- n. 172
March 2026
Editor in chief
Dr. Roberto Magnaghi



News

PRESS RELEASE

A rice sector cry of alarm rises from the rice supply chain.

Unanimous complaint from all European producing countries gathered by Ente Nazionale Risi

A cry of alarm rises from the European rice supply chain: We cannot go on like this! This is the unanimous appeal that emerged from the emergency meeting convened Friday by Ente Nazionale Risi.

The meeting was attended by the entire rice supply chain of the eight European rice-producing countries, which unanimously denounced a situation that has become unsustainable. There is great concern: imports have reached unprecedented levels, heavily penalising rice farmers and the processing industry. Prices, pushed down by international speculation, are forcing farms to make desperate choices, while the European Commission continues to snub the sector.

'European policy is leading us towards irreversible decline,' thundered the president of the National Rice Authority, Natalia Bobba. 'We can no longer stand by and watch, it is time to act!'

Concrete initiatives have therefore been decided upon and will be implemented in the coming weeks with the aim of convincing MEPs not to approve the GSP Regulation, which will be voted on at the end of April, in order to allow for amendments to be made to the part relating to the thresholds for activating the automatic safeguard clause, to review the import duty mechanism established back in 2004, including a specific tariff for pre-packaged imported rice, and to unconditionally demand compliance with the principle of reciprocity so that all imports are subject to the same health, environmental and social standards required of EU producers.

The duty on husked rice decreased to €30/t

(Source: Ente Risi note)

From 1st September 2025 to 28 February 2026, imports of husked rice, excluding Basmati rice, amounted to 144,070 tonnes.

As a result, from 6 March, the duty on husked rice was reduced from €42.50/t to €30/t.

Rules and Calls for bids

[Commission implementing regulation \(EU\) 2026/527 of 3 March 2026](#)

(OJ L 6/3/2026)

fixing the import duties applicable to certain types of husked rice from 6 March 2026.

Food Safety

Rapid Alert System

No alert concerning rice.



Italian market

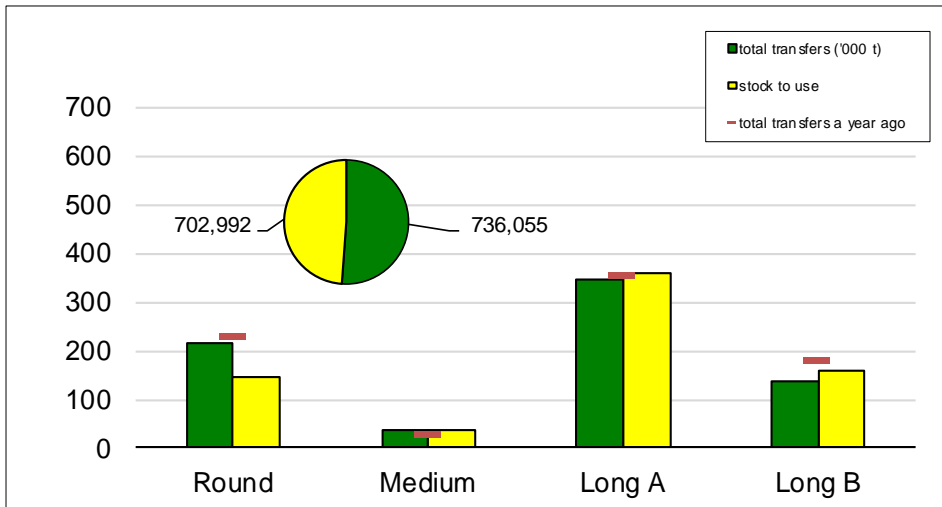
Campaign 2025/2026

From September 1st 2025 to March 3, 2026



Paddy rice transfers

(in tonnes)

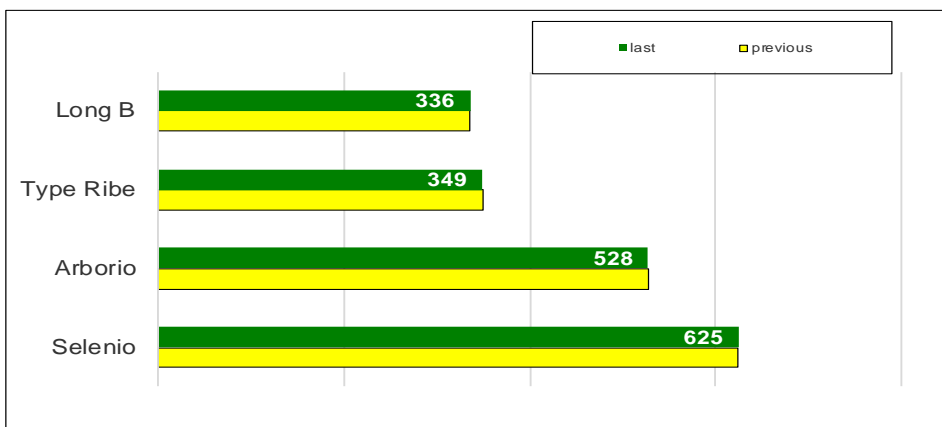


This week, 14,467 tonnes of 'long A', 7,779 tonnes of "round", 6,935 tonnes of 'long B' and 1,339 tonnes of 'medium' were transferred, for a total of 30,520 tonnes. Since the beginning of the campaign, 736,055 tonnes have been placed, down 66,643 tonnes (-8%) compared to a year ago.

51% of the saleable availability has been placed, compared to 57% in the previous campaign.

702,992 tonnes remain to be placed.

Paddy prices Vercelli (€/t)



At the Vercelli Commodities Exchange no changes in reference prices were recorded.

All varieties and types of rice are "Nominal".

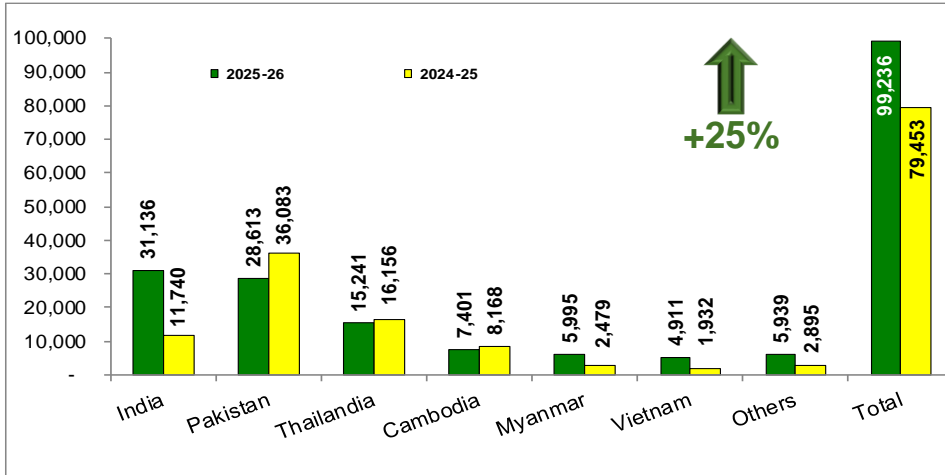
(*) weighted average of the maximum quotations for the varieties Kinder PV, Ely PV and Ronaldo



Import: husked + milled

tonnes in milled rice equivalent

(Source: MAECI Agrim Licences)

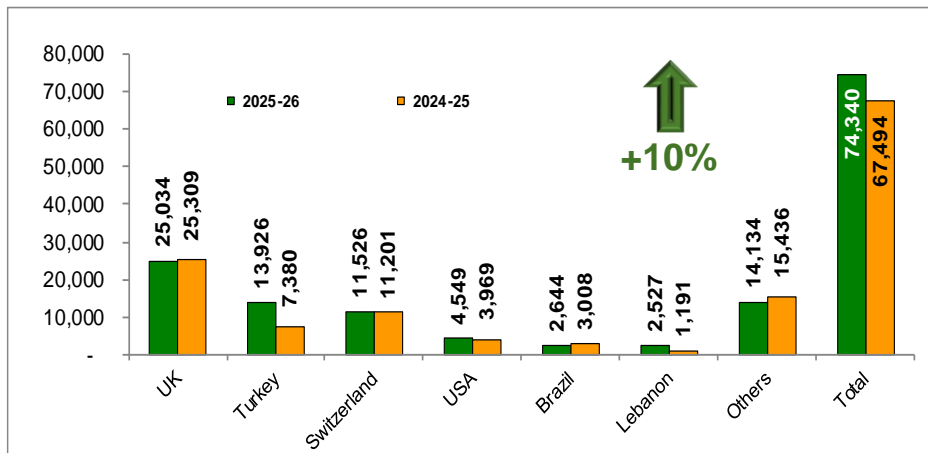


During the first half of the campaign, licences were issued for approximately 99,200 tonnes, in milled equivalent, an increase of about 19,800 tonnes (+25%) compared to last year. Imports subject to duty amounted to 43,102 tonnes, of which 941 tonnes from Mercosur countries, while duty-free imports amounted to 56,134 tonnes, broken down as follows: 32,623 tonnes of Basmati rice, of which 20,683 tonnes from India, 14,276 tonnes from LDCs, of which 7,401 tonnes are Cambodian and 5,995 tonnes are Burmese, while the remainder is broken down between Vietnam (4,613 tonnes), Egypt (2,452 tonnes), GATT (2,068 tonnes) and Perù (90 tonnes).

Export: husked + milled

tonnes in milled rice equivalent

(Source: ENTE RISI Declaration)



Exports rose from 67,494 tonnes a year ago to the current 74,340 tonnes, in milled equivalent, an increase of 6,846 tonnes (+10%) compared to last season.

The increase is almost entirely attributable to exports to Turkey.



European Union market

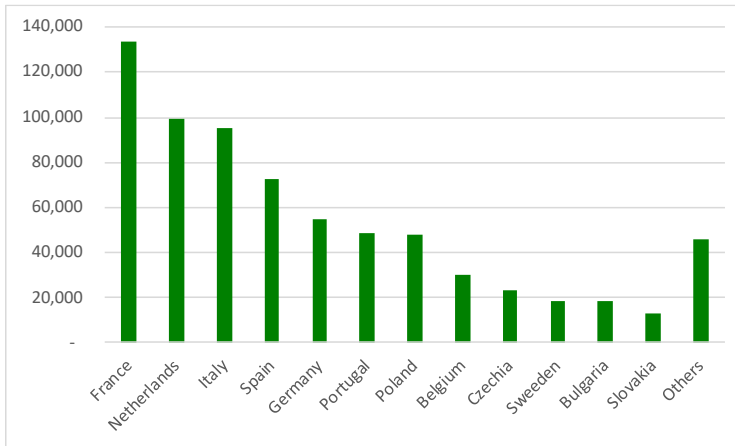
Campaign 2025/2026

From September 1st 2025 to March 1st 2026



Import EU – Export UE

(‘000 tonnes milled rice equivalent)



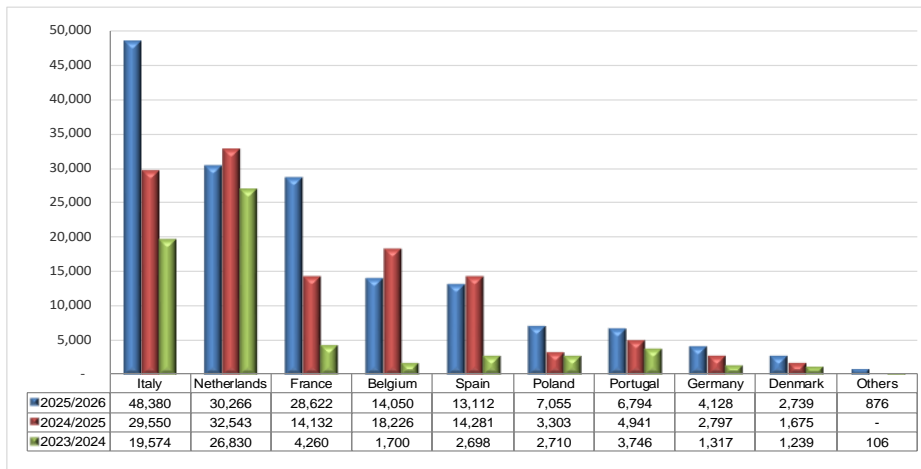
Last week, the European Commission did not update the data, therefore, we are providing the graph of Agrim licences requested by Member States in the period 1/9/2025 - 24/2/2026. Overall, import licences were issued for a volume of over 702,000 tonnes, in milled equivalent, of which almost 133,300 tonnes were requested by France.

Exports, on the basis of volumes actually cleared through customs, amounted to approximately 137,700 tonnes, an increase of over 7,500 tonnes (+6%) compared to the previous marketing year.

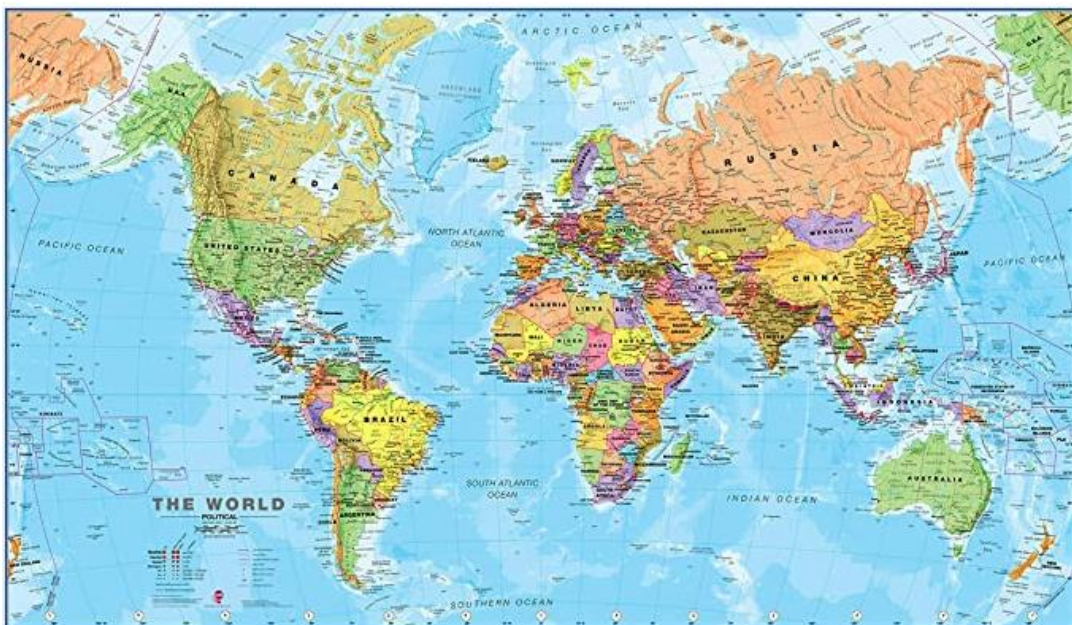
With more than 10,600 tonnes, Turkey is the leading buyer of husked rice, while, with almost 41,800 tonnes of semi-milled/milled rice, the United Kingdom is the main destination for this stage of processing.

Basmati husked rice imports

(‘000 tonnes)



Imports of husked Basmati rice amount to approximately 156,000 tonnes, an increase of 28% compared to a year ago. For the reasons outlined above, the graph below shows the quantities of basmati husked rice imported by Member States, based on the issue of Agrim licences. For the current marketing year, Italy is the main importer of basmati husked rice, followed by the Netherlands and France.



International markets

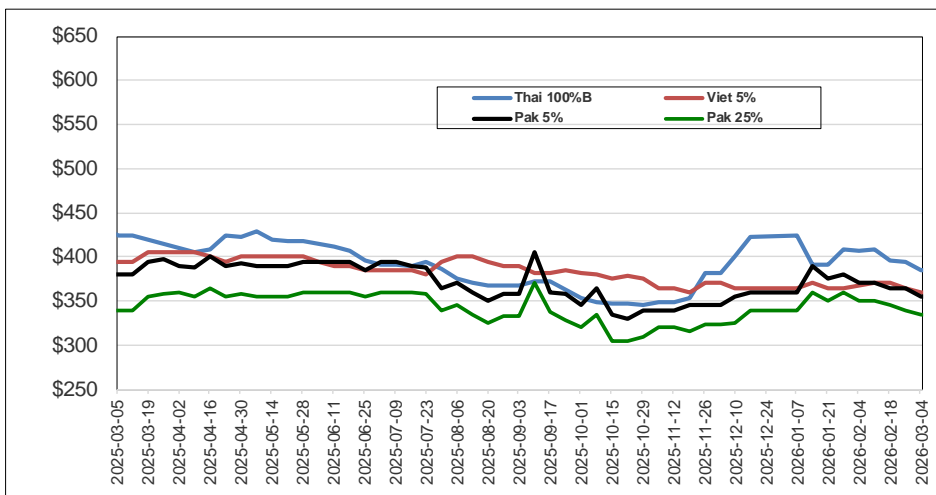
Campaign 2025/2026

From September 1st 2025 to March 4, 2026



International prices

(\$/tonnes)



Weekly prices

Milled rice international FOB quotes		
Exchange rate	€1 = \$1.1649	
Asian Markets	\$/t	€/t
Thai 100%B	385	331
Vietnam 5%	360	309
India 5%	355	305
Pakistan 5%	355	305
Pakistan 25%	335	288
Myanmar 5%	360	309
Pakistan Basmati S. Kernel	1,048	900
Pusa Basmati India	1,150	987
Other Markets	\$/t	€/t
Uruguay 5%	470	403
Argentina 5%	360	309
Brazil Type 1	450	386
USA LG 2/4% Fob Laredo TX	575	494
California MG 1/4% - Med -	950	816