



## Rice industry and trade News



# ***RiceNews***

Year 14°- n. 150  
May 2024  
Editor in chief  
Dr. Roberto Magnaghi



# News

## **CAP: in Italy the deadline for the submission of aid applications will be extended to July 1** (Source: *Ente Risi note*)

In the meeting on May 2, the Permanent Conference for Relations between the State, the Regions and the Autonomous Provinces of Trento and Bolzano reached an agreement on the Minister Lollobrigida's draft decree extending to July 1 the Italian deadline for the submission of CAP aid applications for 2024, which is currently scheduled for May 15.

The text of the understanding is available at the following link: [Conference understanding](#)

## **The global rice market stable but weather risk remains**

(Source: *www.brecorder.com*)

India's July export ban ended a decade of price stability for the world's most-widely consumed staple and heightened food inflation pressure.

"Global rice supplies have stabilised after last year's rally, although the market remains vulnerable to risks from dry weather caused by the El Nino", a senior executive at commodity trader Louis Dreyfus Co (LDC) said.

The unpredictability of weather patterns fuelled by climate change is leading to further supply disruption.

"I think the biggest thing about El Nino, and it's not talked enough about, is the unpredictability of weather events", he said.

"The weather events have always been there, but it's now how it has become unpredictable and how it's difficult has become for the trade to basically solve those imbalances", he said.

Last year's price rally led to lower rice demand by some countries. "You have to keep in mind that a lot of the rice in India ends up in Africa, which is a very price-sensitive market", he said. "And on the way up, I think the market has done its job of rationing demand".

India's export prices fell to their lowest in over three months on subdued demand and ample supplies, while Thailand's prices remained largely flat.

# Food Safety

## ***Rapid Alert System***

- A border rejection notification was sent by Poland concerning Imidacloprid ( $0.043 \pm 0.022$  mg/kg - ppm) in Basmati rice from Pakistan.
- A border rejection notification was sent by Netherland concerning Aflatoxin B1 (4.6  $\mu$ g/kg - ppb) in rice from India.



# **Italian market**

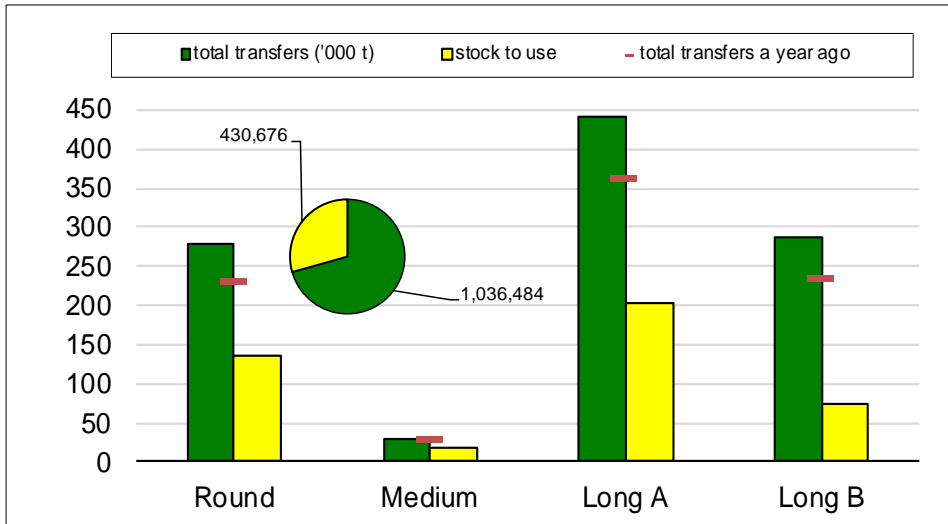
## ***Campaign 2023/2024***

***From September 1, 2023 to April 30, 2024***



## Paddy rice transfers

(in tonnes)

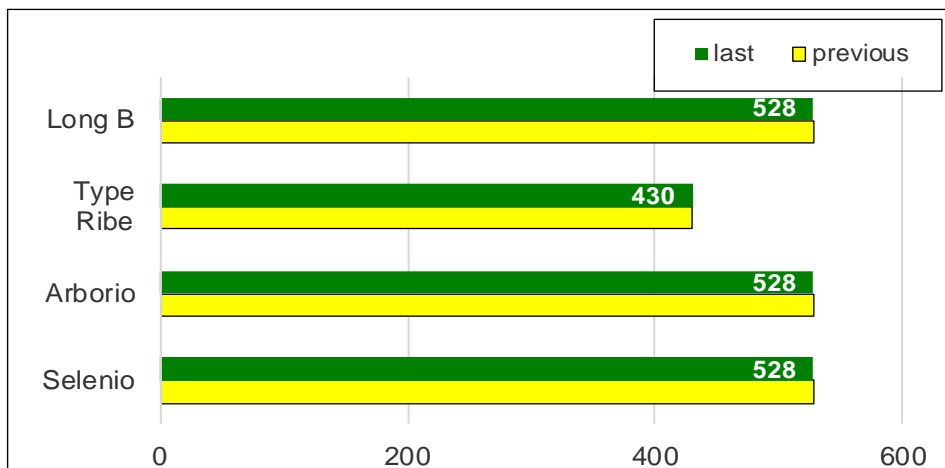


In the last week, paddy rice transfers involved 20,702 tonnes broken down as follows: 9,428 tonnes of “long A,” 5,363 tonnes of “round,” 5,299 tonnes of “long B” and 612 tonnes of “medium.”

Total transfers amounted to 1,036,484 tonnes, placing it at 71% of saleable availability, and was up 172,414 tonnes (+20%) from last marketing year.

Comparison with the 2021/2022 marketing year shows a decrease of 179,019 tonnes (-15%).

## Paddy prices Vercelli (€/t)



On the Vercelli Commodity Exchange there is no change in reference quotations.

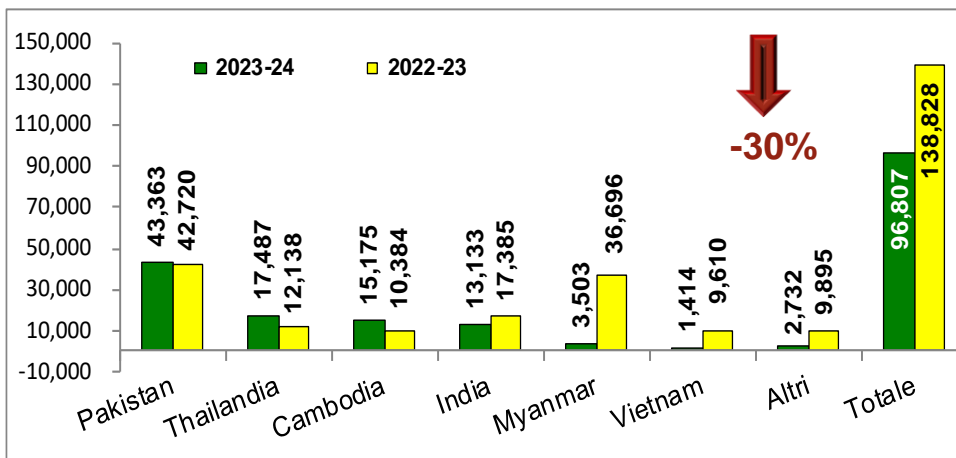
“Nominal” was affixed to Type Ribe.



## Import: husked + milled

tonnes in milled rice equivalent

(Source: MAECI Agrim Licences)



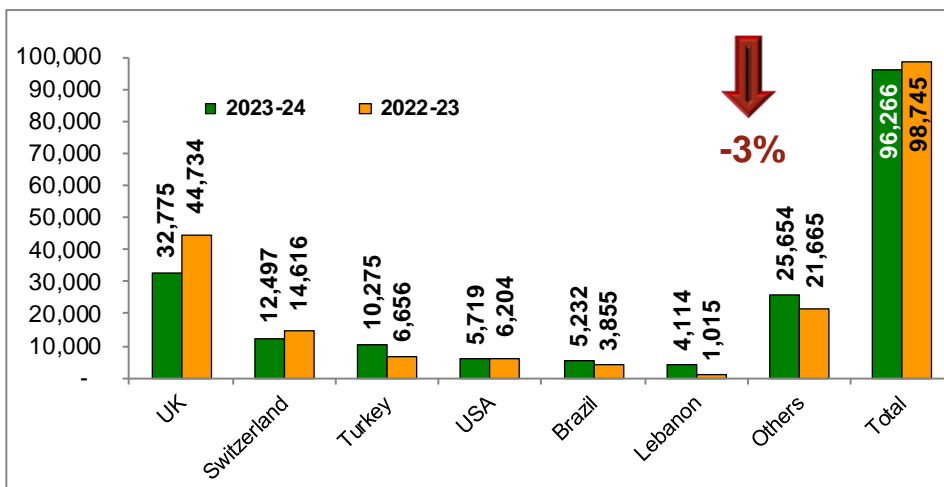
Applications for import licenses involved a volume of 96,807 tonnes, in milled equivalent and paddy rice excluded, showing a decrease of 42,021 tonnes (-30%) compared to the previous marketing year.

The volumes imported with payment of duty, about 52,700 tonnes, cover 54% of the total quantity, while the other approximately 44,100 tonnes concern quantities under exemption of the duty which are broken down as follows: 21,625 tonnes of Basmati rice, 19,280 tonnes originating in LDCs (Cambodia, Myanmar, Bangladesh and Laos), 1,788 tonnes and 1,222 tonnes relating to the Gatt and Vietnam quotas, respectively, and 175 tonnes from Egypt.

## Export: husked + milled

tonnes in milled rice equivalent

(Source: ENTE RISI Declaration)



Exports stand at 96,266 tonnes, in milled equivalent, down 2,479 tonnes (-3%) compared to last marketing year.

In the week of April 22-26, export declarations were issued for a volume of about 3,000 tonnes, of which nearly 1,900 tonnes were split between Turkey, the United Kingdom and Switzerland.



# **European Union market**

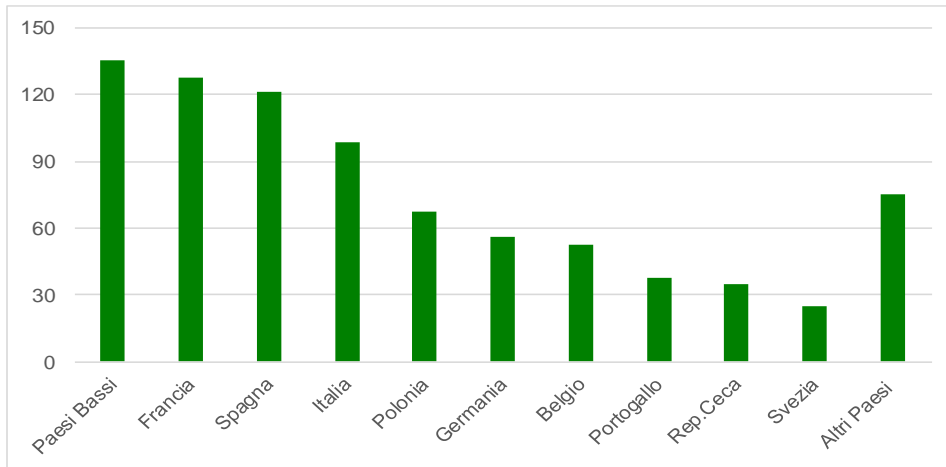
***Campaign 2023/2024***

***from September 1, 2023 to April 30, 2024***



## Import EU

(*'000 tonnes milled rice equivalent*)



The European Commission's failure to update the import actually cleared through customs, so this time we offer details by member state of imports within the EU, compiled on the basis of Agrim licenses issued in each individual country.

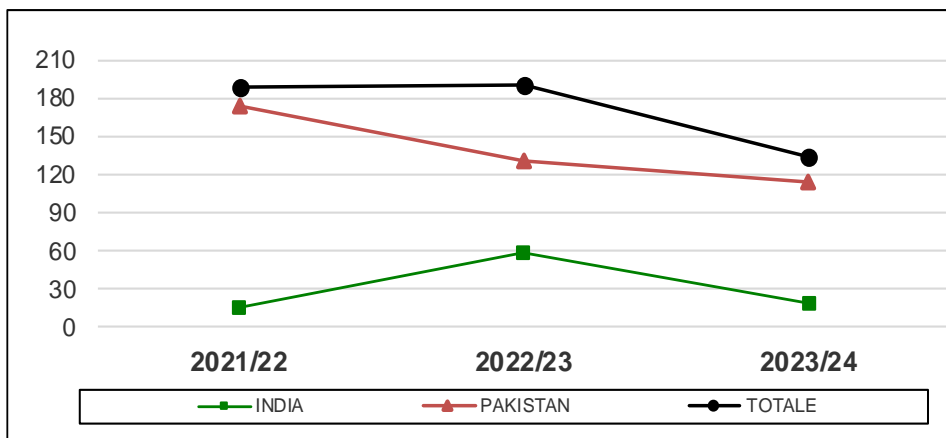
As of April 30, licenses had been issued for nearly 834,000 tonnes, in equivalent milled, down about 147,600 tonnes (-15%) from last marketing year.

The largest volumes are for semi-milled/milled Indica-type rice, which with about 491,600 tonnes account for 59% of total imports.

As for husked rice, there are requests for about 222,300 tonnes, including Basmati rice, with a decrease of more than 104,300 tonnes (-32%) compared to a year ago.

## Basmati husked rice imports

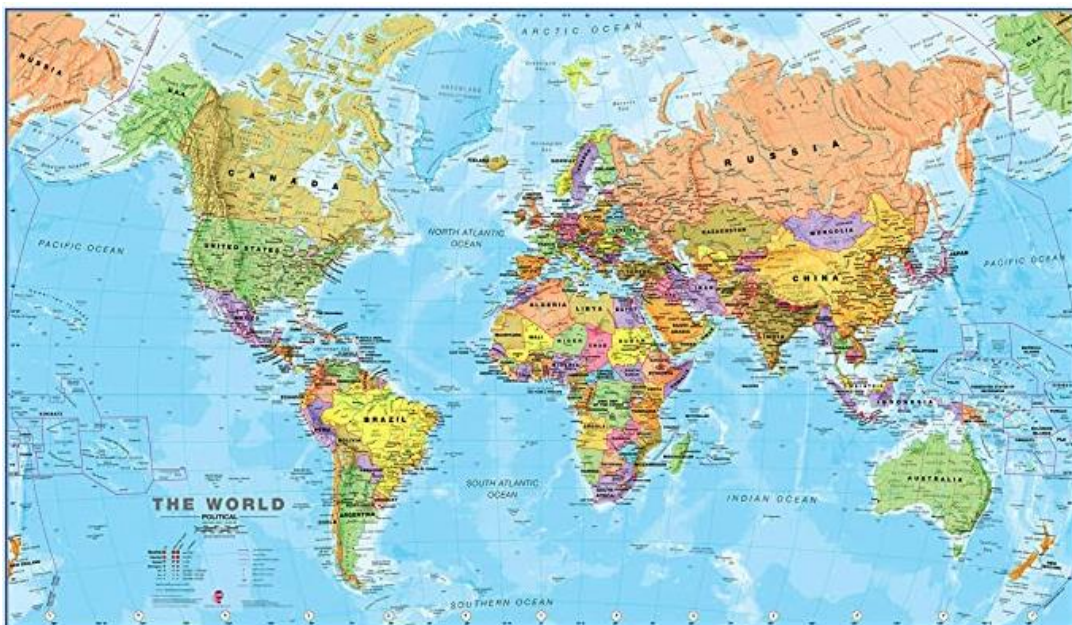
(*'000 tonnes*)



Basmati husked rice imports, at 133,612 tonnes, show a decrease of 56,139 tonnes (-30%) from the previous marketing year.

Basmati rice imports of Pakistani origin amounted to 114,209 tonnes, showing a decrease of 16,038 tonnes (-12%), while those of Indian origin, amounting to 19,403 tonnes, show a decrease of 40,101 tonnes (-67%).





# **International markets**

***Campaign 2023/2024***

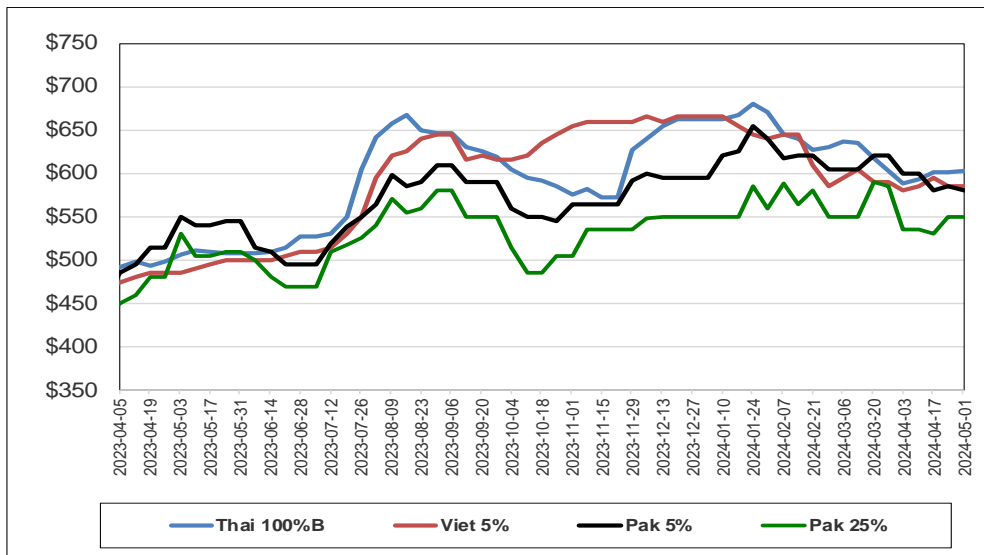
***From September 1, 2023 to May 1, 2024***





## International prices

(\$/tonnes)



## Weekly prices

Milled rice international FOB quotes		
Exchange rate	€1 = \$1.0698	
Asian Markets	\$/t	€/t
Thai 100%B	603	564
Vietnam 5%	585	547
India 5%	divieto export	N.A.
Pakistan 5%	580	542
Pakistan 25%	550	514
Myanmar 5%	600	561
Pakistan Basmati S. Kernel	970	907
India Basmati min.exp.price	950	888
Other Markets	\$/t	€/t
Uruguay 5%	740	692
Argentina 5%	725	678
Brasile Type 1	767	717
USA LG 2/4% Fob US Gulf	820	766
California MG 1/4% - Med -	835	781

Source: Creed Rice Co.