



News

RiceNews with statistical data updated to the end of the previous month. (Source: Ente Risi note)

From now on, RiceNews will be published with statistical data updated to the end of the previous month.

European Parliament says YES to automatic safeguard for rice (Source: Ente Risi note)

On Tuesday 3 May, the European Parliament's International Trade Committee expressed 33 votes in favour and 8 abstentions on the draft revision of the Generalised System of Preferences (GSP) regulation, which provides for an automatic safeguard mechanism for rice imports from LDCs.

The European Parliament will take this text to the trilogue with the European Commission and the EU Council, and negotiations between the EU institutions will only start once the EU Council has reached a position.

Ente Nazionale Risi President Paolo Carrà said:

"Thanks to the intervention of the politicians, the strong commitment of COPA COGECA and the technical contribution of Ente Risi, we have been able to obtain a fundamental result for the European rice supply chain resolving the serious problem of zero-duty rice imports from Cambodia and Myanmar. If our government will support with determination the position of the European Parliament during the work of the EU Council, the European Commission will be isolated in the trilogue and we can really hope to achieve what the EU rice sector hoped for during the IV European Rice Forum".

International Markets

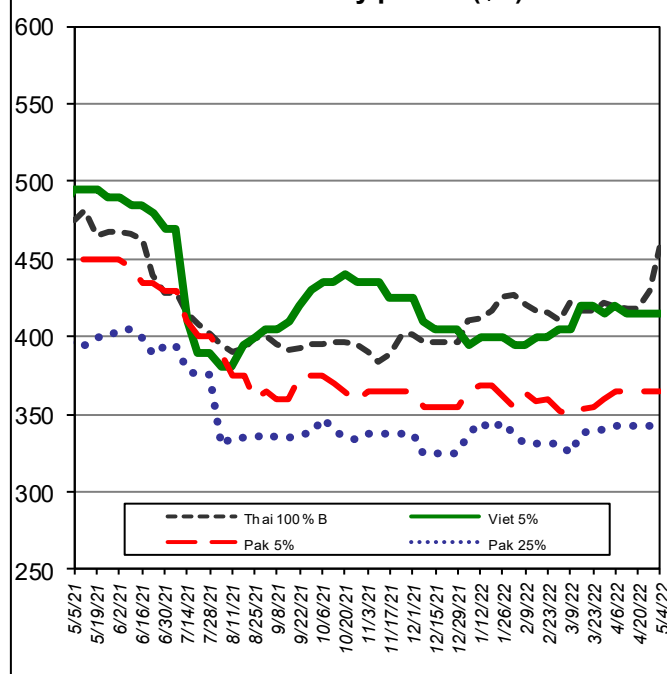


Milled rice international FOB quotes

Exchange rate 1 € = 1.0531\$

Asian Markets	\$/t	€/t
Thai 100%B	457	434
Vietnam 5%	415	394
India 5%	350	332
Pakistan 5%	365	347
Pakistan 25%	342	325
Myanmar 5%	425	404
India Basmati trad.	1,700	1,614
Other Markets	\$/t	€/t
Uruguay 5%	545	518
Argentina 5%	510	484
Brasile Type 1	570	541
USA LG 2/4% Fob Bulk Nola	655	622
California MG 1/4% Med	1,365	1,296

Weekly prices (\$/t)



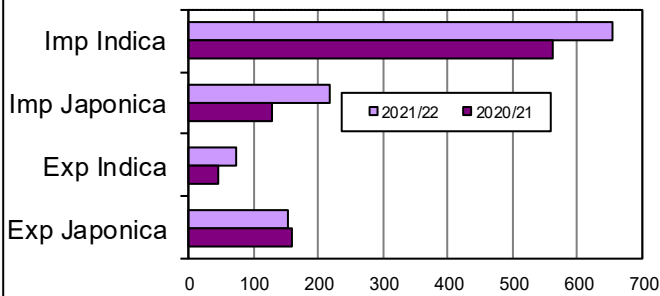
Food Safety

Rapid Alert System (Source: EFSA)

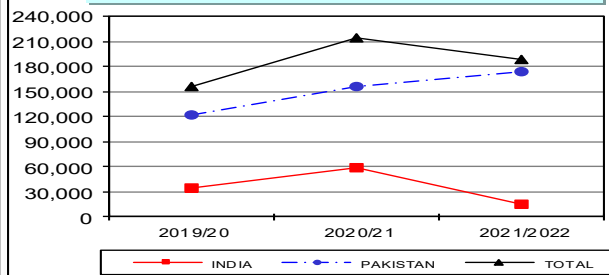
- A border rejection was sent by Spain concerning chlorpyrifos (0.19 mg/kg - ppb) in Basmati rice from India.
- A border rejection was sent by Netherland concerning aflatoxin B1 (7.2 µg/kg - ppb), total aflatoxin (9.1 µg/kg - ppb) in super Kernel Basmati brown rice from Pakistan.
- A border rejection was sent by Netherland concerning aflatoxin B1 (6.8 µg/kg - ppb), in super Basmati brown rice from Pakistan.
- A border rejection was sent by Netherland concerning aflatoxin B1 (8.5 µg/kg - ppb), total aflatoxin (8.5 µg/kg - ppb) in super Basmati brown rice from Pakistan.

European Market

Import Export EU ('000 tonnes milled rice equivalent)



Basmati husked rice imports (in tonnes)



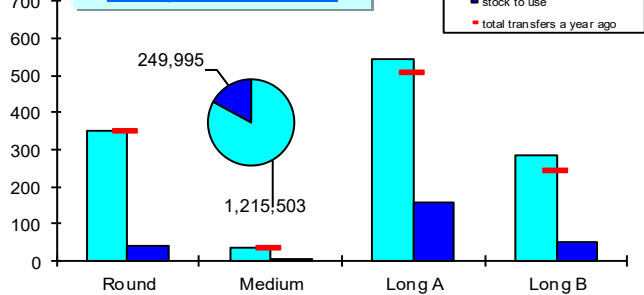
In focus

Around 870,700 tonnes, in milled equivalent, were imported into the 27 EU countries, an increase of about 178,200 tonnes (+26%) over the previous marketing year. Paddy rice imports remained stable at 5,600 tonnes, down 66%, while imports of husked rice, amounting to about 297,300 tonnes, and semi-milled/milled rice, amounting to about 567,800 tonnes, were up by about 13,600 tonnes (+5%) and about 175,300 tonnes (+45%) respectively. Imports of Basmati husked rice amounted to 188,768 tonnes, of which 173,291 tonnes of Pakistani origin and 15,477 tonnes of Indian origin. Compared to last year, imports were down by 26,022 tonnes (-12%).

Exports stand at about 226,0017 tonnes, in milled equivalent, of which about 97,000 tonnes are destined for the United Kingdom, and show an increase of about 19,800 tonnes (+10%) compared to the previous marketing year. If, for the 2020/2021 campaign, we integrate the export (70,160 t) to the UK in the pre-Brexit period, between 1/9/2020 and 31/12/2020, the export of the current campaign, on the contrary, is down by about 50,400 t (-18%).

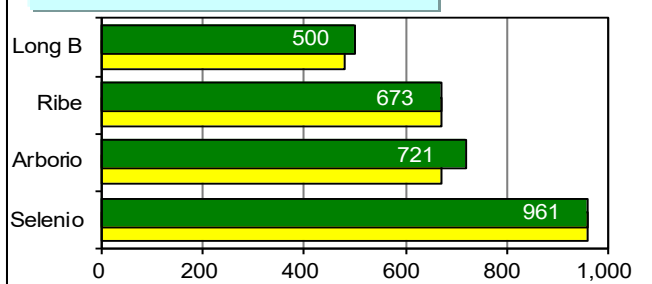
Italian Market

Paddy rice transfers



Paddy price

Vercelli Commodity Exchange (€/tonne)



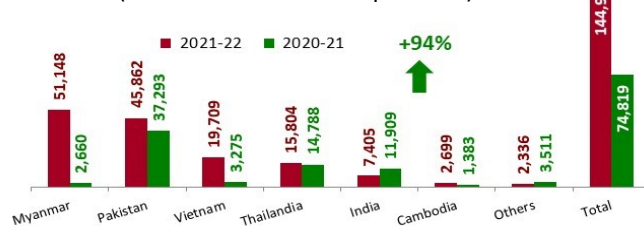
In focus

This week's paddy transfers involved 14,246 tonnes of "long A", 5,779 tonnes of "long B", 5,373 tonnes of "round" and 131 tonnes of "medium", for a total of 25,529 tonnes. Since the beginning of the campaign, 1,215,503 tonnes of paddy have been transferred, an increase of 74,346 tonnes (+7%) compared to the previous campaign. The biggest increases were in the "long B" (+43,551 t; +18%) and "long A" (+32,780 t; +6%) segments. The "round" segment was at the same level as last year (+641 t; +0.2%), while the "medium" segment contracted by 2,626 t (-7%).

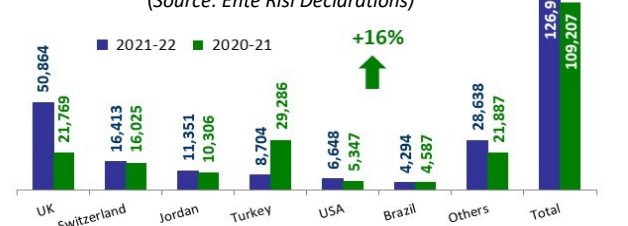
At the Vercelli Stock Exchange there was an increase in the quotation for Lungo B (+€20) and Arborio (+€48). Quotations remain nominal. Following the registration of the quantities relating to the Gatt and Vietnam quotas allocated in March and April, equal to 9,328 tonnes, and the Agrim licences applied for in the last week, equal to about 2,000 tonnes, total imports reached 144,943 tonnes, in milled equivalent, marking an increase of 70,144 tonnes (+94%) compared to last year. Import licences issued for Indica rice amounted to 88,815 tonnes, an increase of 17,241 tonnes (+24%), while those for Japonica rice amounted to 56,148 tonnes, covering 39% of the total requested. For actual customs clearance, see table at the bottom of the page.

Exports amounted to 126,912 tonnes, in milled equivalent, an increase of 17,705 tonnes (+16%). If we add to the 2020/21 campaign the volumes exported to the United Kingdom in the period between 1/9/2020 and 31/12/2020, equal to 26,096 tonnes, exports are, on the contrary, down by almost 8,400 tonnes (-6%).

Import: husked + milled - till April 29, 2022
(tonnes in milled rice equivalent)



Export: husked + milled - till April 29, 2022
(tonnes in milled rice equivalent)
(Source: Ente Risi Declarations)



Italian imports till May 1, 2022 - Customs declarations - Source: DG Agri (tonnes in milled rice equivalent)

Campaign	Paddy			Brown rice			Semi-milled / Milled rice			TOTAL		
	Indica	Japonica	Total	Indica	Japonica	Total	Indica	Japonica	Total	Indica	Japonica	TOTAL
2021/2022	5.565	-	5.565	33.172	1.315	34.487	48.796	38.992	87.788	87.533	40.307	127.840
2020/2021	4.966	-	4.966	31.794	522	32.316	37.371	2.454	39.825	74.131	2.976	77.107

Ente Nazionale Risi - Milan

c.f. 03036460156 www.enterisi.it e-mail: info@enterisi.it tel. +39 02.88.55.111 fax +39 02.30.13.10.84