



## **Rice industry and trade News**



**Year 15°- n. 158  
January 2025  
Editor in chief  
Dr. Roberto Magnaghi**



# News

## **Provisional balance sheet for the 2024/2025 marketing year**

*(Source: Ente Nazionale Risi Note)*

The Board of Directors of Ente Nazionale Risi has approved the final balance sheet for the 2024/2025 marketing year and the provisional balance sheet for the 2023/2024 marketing year.

To consult the balance sheet click on the following link: [balance sheets](#)

## **EU Council: Polish Presidency begins** *(Source: Ente Nazionale Risi Note)*

Poland takes over the presidency of the Council of the European Union for the second time. Thirteen years after Poland's first presidency and 20 years after joining the EU, Poland presents a presidency programme whose main objective is to strengthen European security in its multiple dimensions: external, internal, information, economic, energy, food and health.

With regard to agriculture, the Polish Presidency stated that the work of the Agriculture and Fisheries Council will focus on the measures needed to improve the competitiveness of the agricultural sector and increase its resilience to crises, recognising that these measures are essential both to stabilise farmers' incomes and to ensure food security.

In addition, the Polish Presidency will hold a policy debate on the vision for agriculture and food, and believes that future CAP solutions should favour the construction and maintenance of a competitive and resilient European agriculture, as well as the development of rural areas.

# Food Safety

## **Rapid Alert System**

- A border rejection was sent by Italy concerning Chlorpyrifos ( $0.042 \pm 0.021$  mg/kg – ppm) in rice from Pakistan.
- A border rejection was sent by Denmark concerning Thiamethoxam (0.10 mg/kg) and Tricyclazole (0.32 mg/kg) in rice from India.
- A border rejection was sent by Denmark concerning Imidaclopride (0.04 mg/kg – 0.026 mg/kg) in rice from Pakistan.
- A border rejection was sent by Portugal concerning unauthorised genetically modified white rice cakes from China.
- An information for attention was sent by Slovenia concerning Acetamiprid ( $0.023 \pm 0.011$  mg/kg - ppm) in rice from Cambodia.
- A border rejection was sent by Spain concerning Aflatoxine in rice from Pakistan.



# **Italian market**

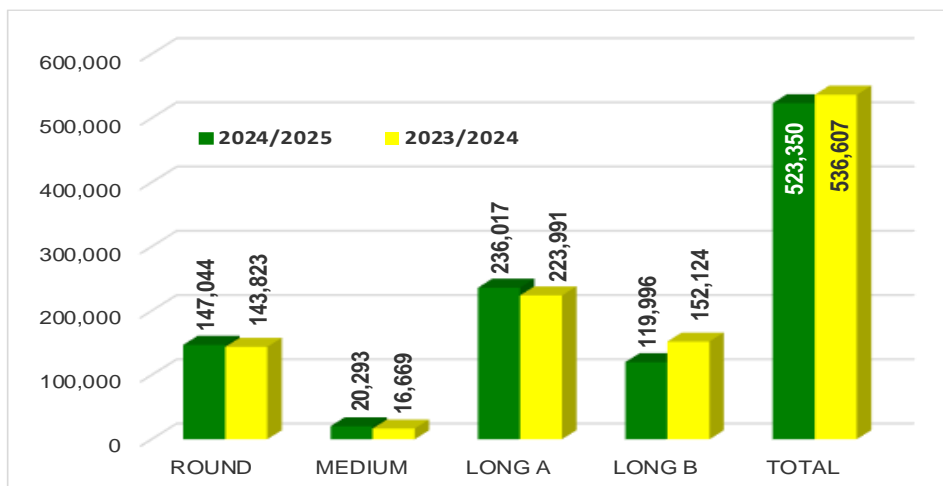
## ***Campaign 2024/2025***

***From September 1° 2024 to January 7, 2025***



## Paddy rice transfers

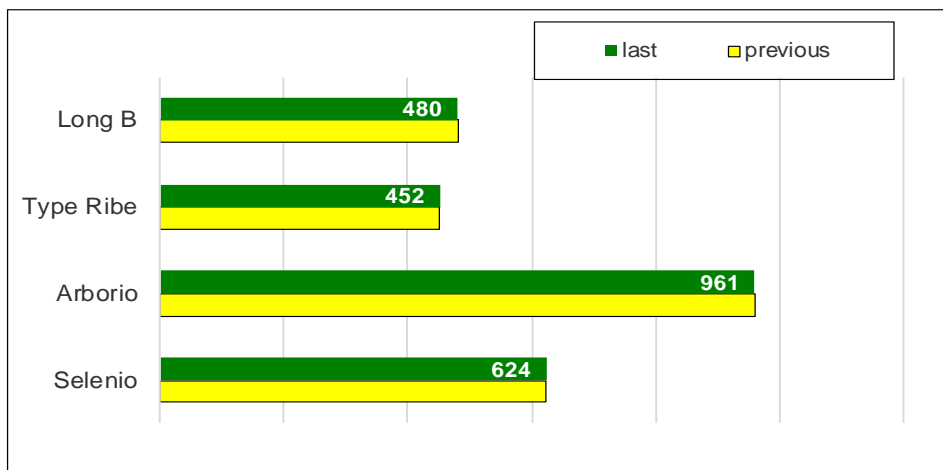
(in tonnes)



Paddy rice transfers this week involved 5,525 tonnes, broken down as follows: 3,121 tonnes of 'long A', 1,443 tonnes of 'long B', 796 tonnes of 'round' and 165 tonnes of 'medium'.

Since the beginning of the marketing year, 523,350 tonnes have been transferred, down 13,257 tonnes (-2%) from a year ago. The 'round', 'medium' and 'long A' type of paddy rice showed increases of 2%, 22% and 5% respectively, while the 'long B' type was down 21%.

## Paddy prices Vercelli (€/t)



On the Vercelli Commodity Exchange there is no change in reference prices.

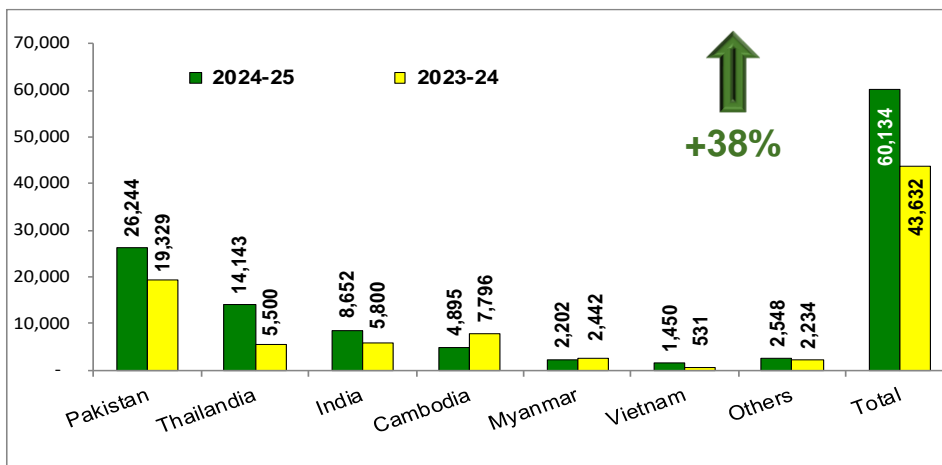
(\*) weighted average of the maximum quotations for the varieties Diva PV, CL007, Dardo/Ronaldo and Leonardo



## Import: husked + milled

tonnes in milled rice equivalent

(Source: MAECI Agrim Licences)



Imports rose from 43,632 tonnes a year ago to the current 60,134 tonnes, in milled rice equivalent, an increase of 16,502 tonnes (+38%).

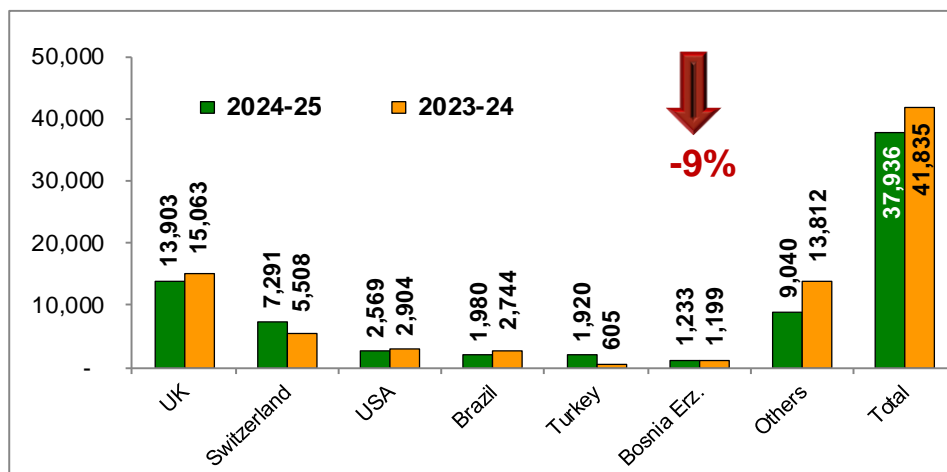
With 26,244 tonnes, of which 11,793 tonnes of Basmati rice, Pakistan is confirmed as Italy's main supplier, followed by Thailand with 14,143 tonnes and India with 8,652 tonnes, of which 2,736 tonnes of Basmati rice.

The total imports from these three countries, amounting to 49,039 tonnes, represent 82% of the total imported volume. Indica rice accounts for 98% of the imports.

## Export: husked + milled

tonnes in milled rice equivalent

(Source: ENTE RISI Declaration)



Exports to third countries amounted to just over 37,900 tonnes in milled rice equivalent, down by almost 3,900 tonnes (-9%) compared to the previous marketing year.

Among the main destinations, only exports to Switzerland and Turkey recorded increases of 32% and 217% respectively.

For all other destinations there was a decline in sales.



# **European Union market**

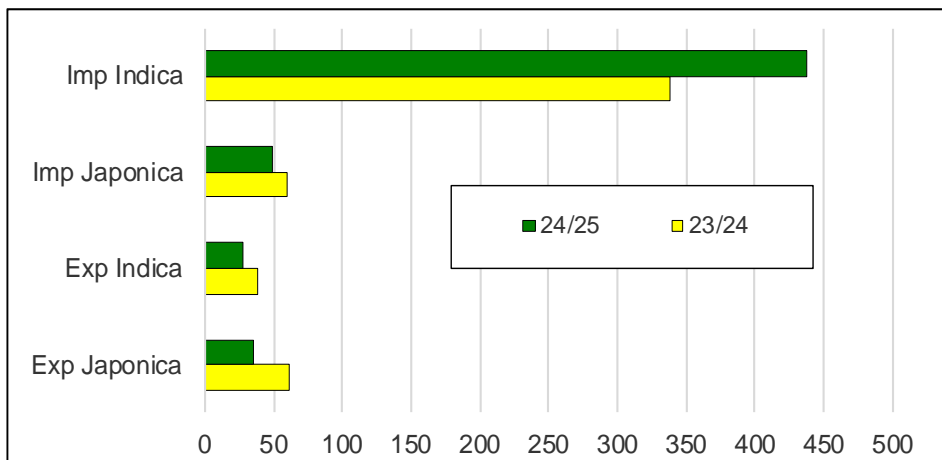
***Campaign 2024/2025***

***From September 1<sup>st</sup> 2024 to January 5, 2025***



## Import Export EU

(*'000 tonnes milled rice equivalent*)



Imports into the EU stand at around 486,400 tonnes, in milled rice equivalent, an increase of more than 88,500 tonnes (+22%) compared to a year ago.

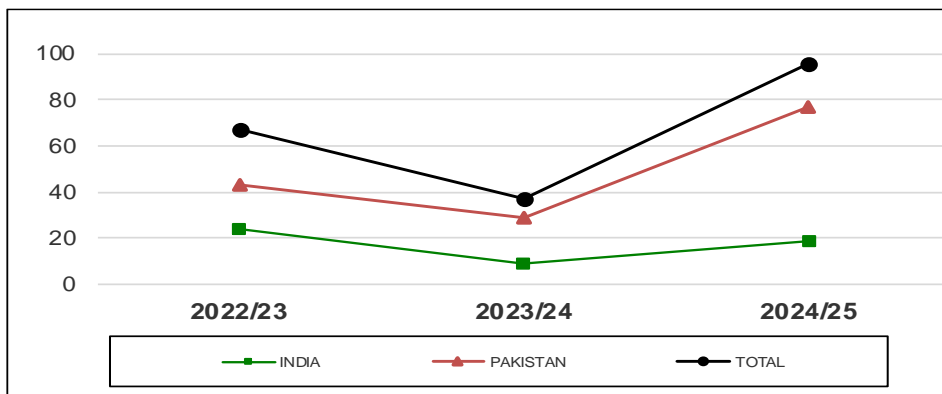
Imports of husked rice, almost 155,500 tonnes, are up by about 70,900 tonnes (+84%), while imports of semi-milled/milled rice, about 330,900 tonnes, are up by 6%.

Imports of semi-milled/milled rice from Cambodia and Myanmar stand at 135,352 tonnes, up by 3,224 tonnes (+2%) from the previous marketing year.

Export data are still incomplete as some Member States do not provide timely updates, so the current drop (-37%) does not represent the real export trend, which sees a placement of about 62,200 tonnes compared to more than 98,100 tonnes a year ago.

## Basmati husked rice imports

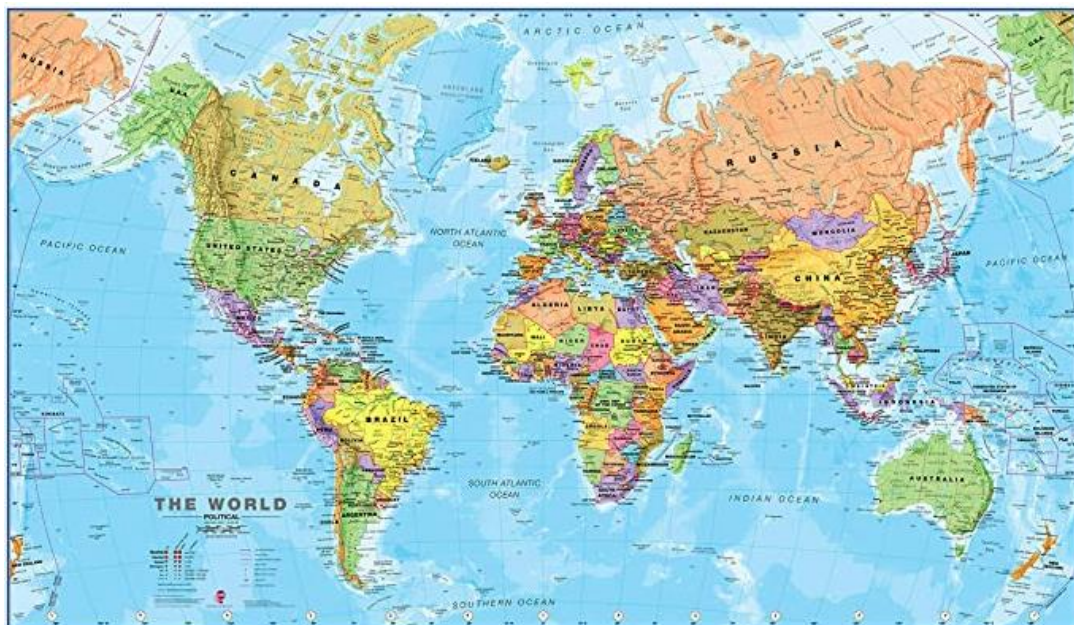
(*'000 tonnes*)



Import licences for Basmati husked rice were issued for a quantity of 95,712 tonnes, an increase of 58,591 tonnes (+158%) over the previous marketing year.

The largest increase was in imports of Pakistani Basmati rice, which rose from 28,627 tonnes a year ago to 77,303 tonnes today, an increase of 48,675 tonnes (+170%).





# **International markets**

***Campaign 2024/2025***

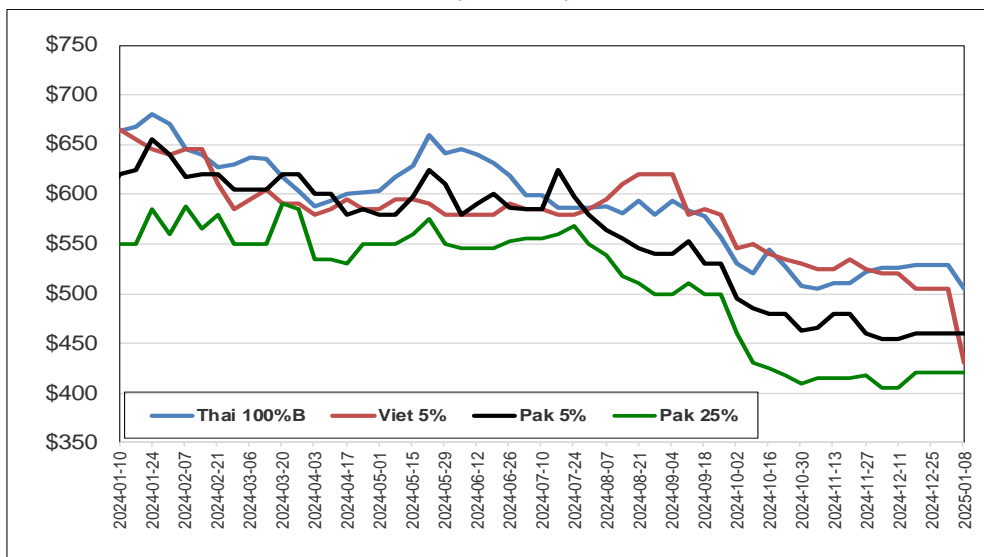
***From September 1<sup>st</sup> 2024 to January 8, 2025***





## International prices

(\$/tonnes)



## Weekly prices

Milled rice international FOB quotes		
Exchange rate	€1 = \$1.0286	
Asian Markets	\$/t	€/t
Thai 100%B	505	491
Vietnam 5%	430	418
India 5%	445	433
Pakistan 5%	460	447
Pakistan 25%	420	408
Myanmar 5%	490	476
Pakistan Basmati S. Kernel	1,010	982
Pusa Basmati India	1,050	1,021
Other Markets	\$/t	€/t
Uruguay 5%	690	671
Argentina 5%	700	681
Brazil Type 1	690	671
USA LG 2/4% Fob US Gulf	820	797
California MG 1/4% - Med -	805	783