



Rice industry and trade News



**Year 15°- n. 159
February 2025
Editor in chief
Dr. Roberto Magnaghi**



News

Members of the European Committee for Agriculture and Food appointed

(Source: european commission representation in Italy)

The European Commission has appointed the 30 organisations to become members of the European Committee for Agriculture and Food.

These organisations represent the rural and farming community, other actors in the food chain and civil society, such as environmental and climate protection, animal welfare and consumer groups.

The selected organisations demonstrate broad expertise and experience in areas relevant to agriculture and food at EU level and have broad geographical representation in all Member States.

The first meeting of the committee, chaired by the Commissioner for Agriculture and Food, Christophe Hansen, will be held on 4 February.

President von der Leyen said: "By setting up a European Agriculture and Food Committee, we are implementing one of the key recommendations of the strategic dialogue on the future of agriculture, which I launched last year. The new culture of consultation and dialogue will continue".

Commissioner Hansen said: "I would like to congratulate the organisations selected to join the new European Food and Agriculture Committee. I look forward to benefiting from their advice and practical experience in shaping our agricultural policies. I also encourage the members to continue the dialogue among themselves and to maintain the spirit of consensus fostered by the strategic dialogue. In our common interest, we must leave polarised discussions behind us and work together for the future".

The European Committee on Agriculture and Food was established on 5 December 2024 and will provide high-level advice to the Commission on the follow-up to the Strategic Dialogue report on the future of agriculture in the EU.

It will also contribute to the work on the vision for agriculture and food, to be presented within the first 100 days of the mandate.

The Advisory Committee aims to support a new culture of dialogue, trust and multi-participation between farmers, food chain actors and civil society, as well as with the Commission.

Food Safety

Rapid Alert System

- An information notification for attention was sent by Germany concerning mineral oil components (MOAH - 0.56 ± 0.11 mg/kg – ppm) in Basmati rice from Pakistan, via Netherlands.
- A border rejection was sent by Germany concerning Imidacloprid (0.011 mg/kg) in Basmati rice from Pakistan.



Italian market

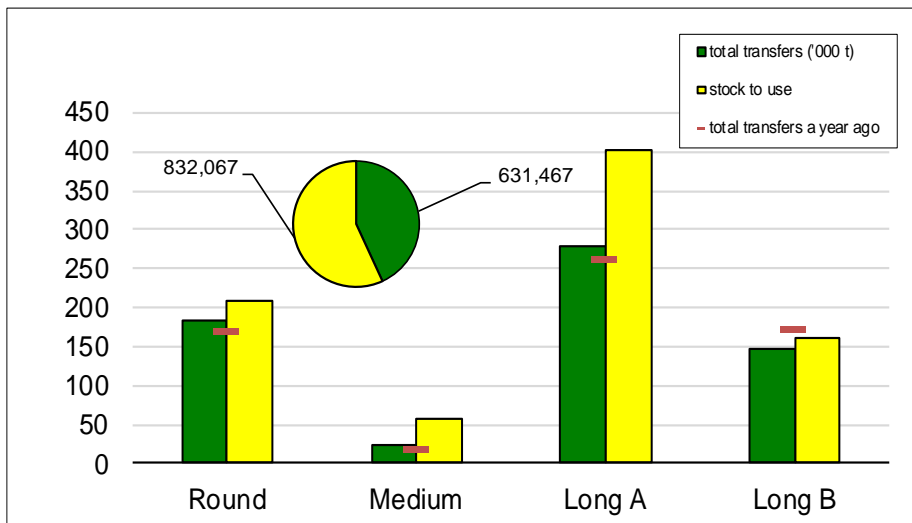
Campaign 2024/2025

From September 1° 2024 to January 28, 2025



Paddy rice transfers

(in tonnes)

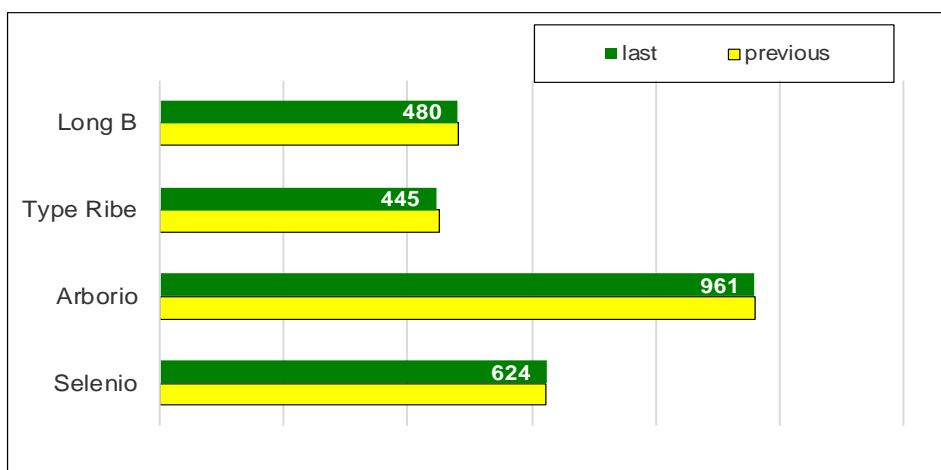


Producer transfers this week involved 35,343 tonnes of paddy rice, of which 14,710 were “long A”, 11,533 “round”, 7,600 “long B” and 1,500 “medium”.

Total transactions amounted to 631,467 tonnes, an increase of 5,904 tonnes (+1%) compared to last year.

832,067 tonnes remain to be placed.

Paddy prices Vercelli (€/t)



At the Vercelli Commodity Exchange there is a drop of €7 in the Ribe type. No change in the other reference prices.

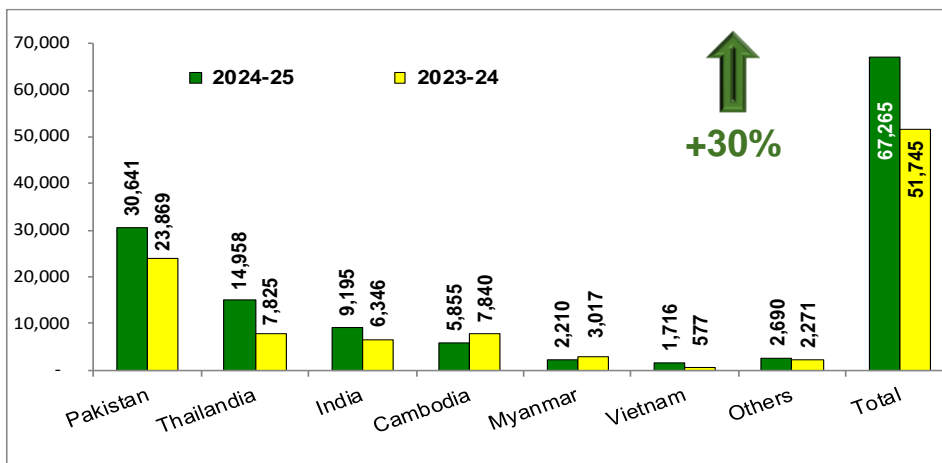
(*) weighted average of the maximum quotations for the varieties Diva PV, CL007, Dardo/Ronaldo and Leonardo



Import: husked + milled

tonnes in milled rice equivalent

(Source: MAECI Agrim Licences)



Import licences for husked and semi-milled/milled rice were issued for a volume of 67,265 tonnes, in milled equivalent, up by 15,520 tonnes (+30%) compared to the previous marketing year.

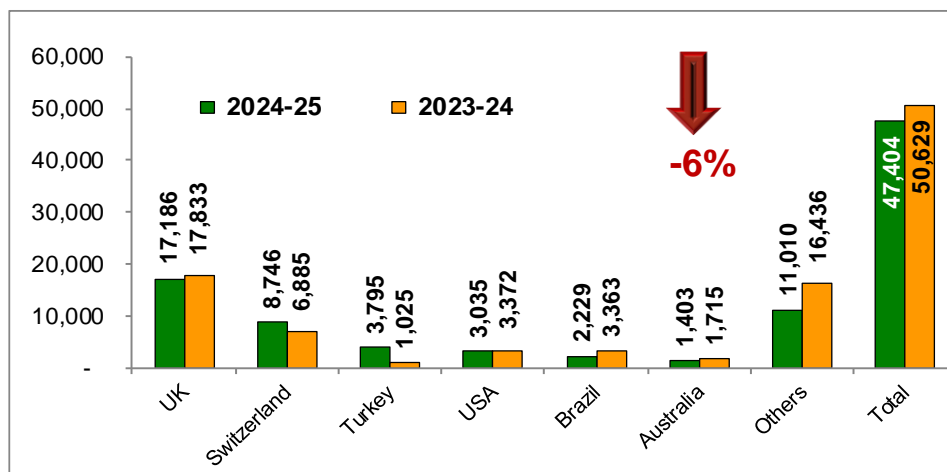
Imports from LDCs (Cambodia, Myanmar, Bangladesh and Laos) totalled 8,255 tonnes, of which 5,855 tonnes from Cambodia and 2,210 tonnes from Myanmar.

Compared to a year ago, imports from LDCs decreased by 3,138 t (-28%), of which Cambodia (-1,985 t; -25%) and Myanmar (-807 t; -27%).

Export: husked + milled

tonnes in milled rice equivalent

(Source: ENTE RISI Declaration)



Exports to third countries amounted to 47,404 tonnes, down 3,225 tonnes (-6%) compared to last year.

The most exported type of rice was "long A" (23,752 t), followed by "round" (16,691 t), 'long B' (6,521 t) and "medium" (440 t).

Japanica rice exports account for 86% of the total exported volume.



European Union market

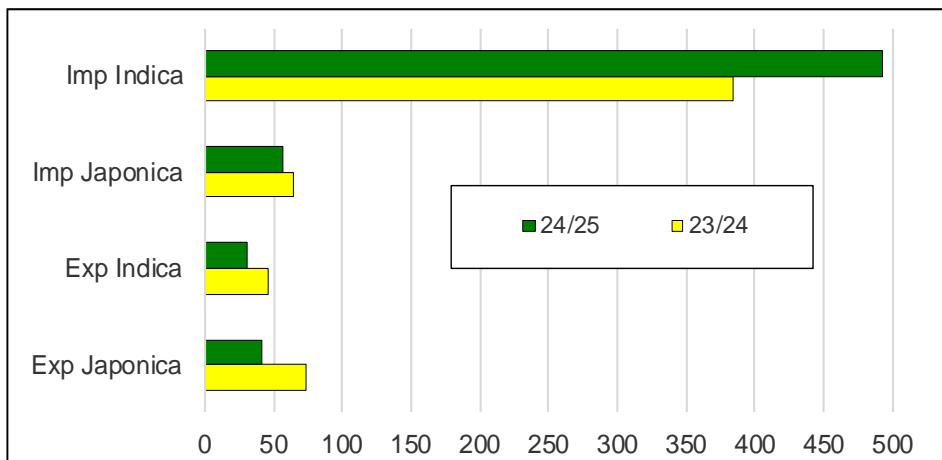
Campaign 2024/2025

From September 1st 2024 to January 26, 2025



Import Export EU

(^{'000 tonnes milled rice equivalent})



Since the beginning of the marketing year, approximately 549,800 tonnes in milled rice equivalent have been cleared through customs in the EU, an increase of approximately 101,100 tonnes (+23%) compared to the previous marketing year.

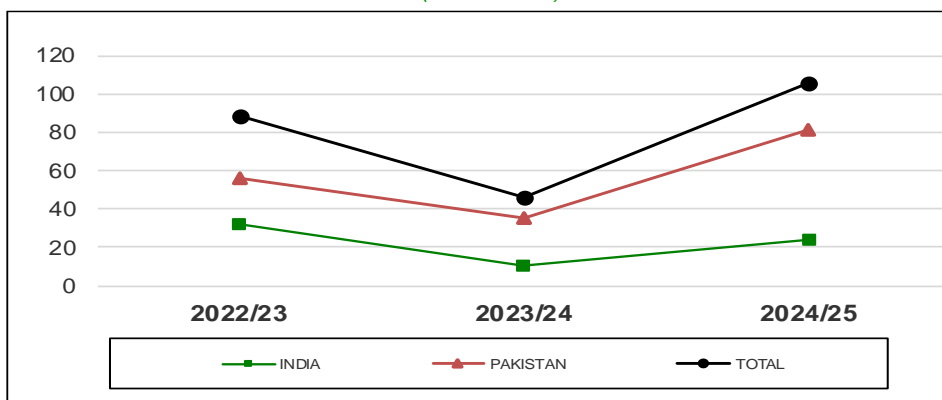
Imports of Japonica-type rice, about 57,100 tonnes, decreased by just under 7,200 tonnes (-11%), while imports of Indica-type rice, almost 492,700 tonnes, increased by over 108,300 tonnes (+28%).

Bulgaria is the country that imported the largest volumes of Japonica rice, around 14,600 tonnes, followed by France with almost 7,900 tonnes and the Netherlands and Germany, both with just over 6,100 tonnes. As far as Indica rice is concerned, with more than 89,400 tonnes, it is the Netherlands that holds the record for imports, followed by Belgium with almost 83,200 tonnes, France with about 81,100 tonnes and Italy with more than 59,200 tonnes.

Export data are not yet reliable, so pending a final resolution of the statistical problem, any assessment is suspended.

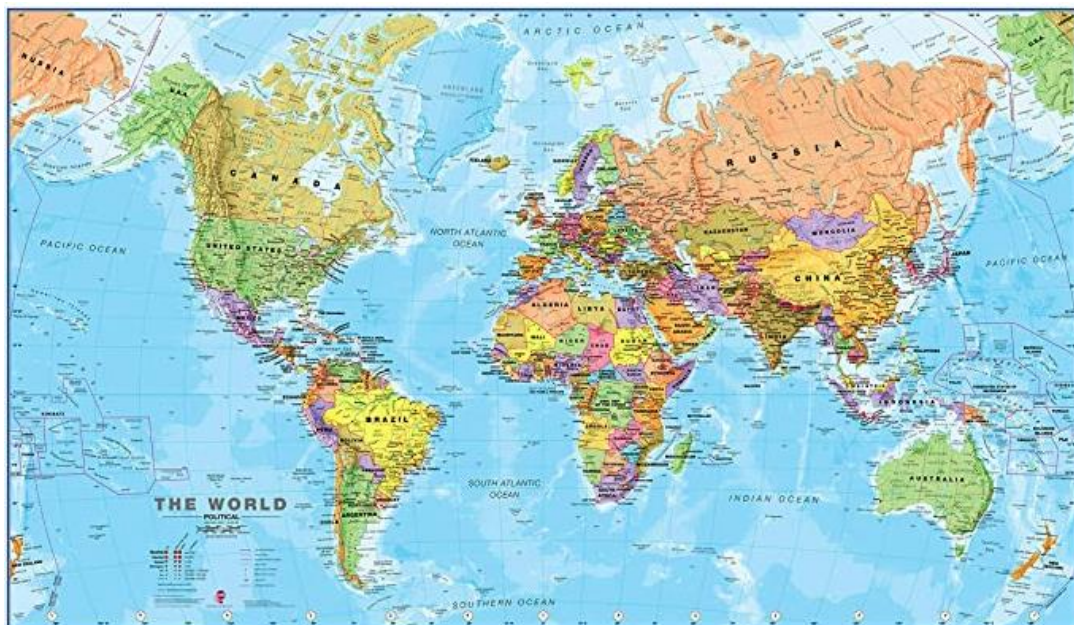
Basmati husked rice imports

(^{'000 tonnes})



Imports of Basmati husked rice amounted to 106,000 tonnes, of which 81,778 tonnes were of Pakistani origin and 24,222 tonnes of Indian origin, an increase of 59,963 tonnes (+130%) over last year.

Imports of Pakistani Basmati rice are up by 46,111 tonnes (+129%), while imports of Indian Basmati rice are up by 13,852 tonnes (+134%) from a year ago.



International markets

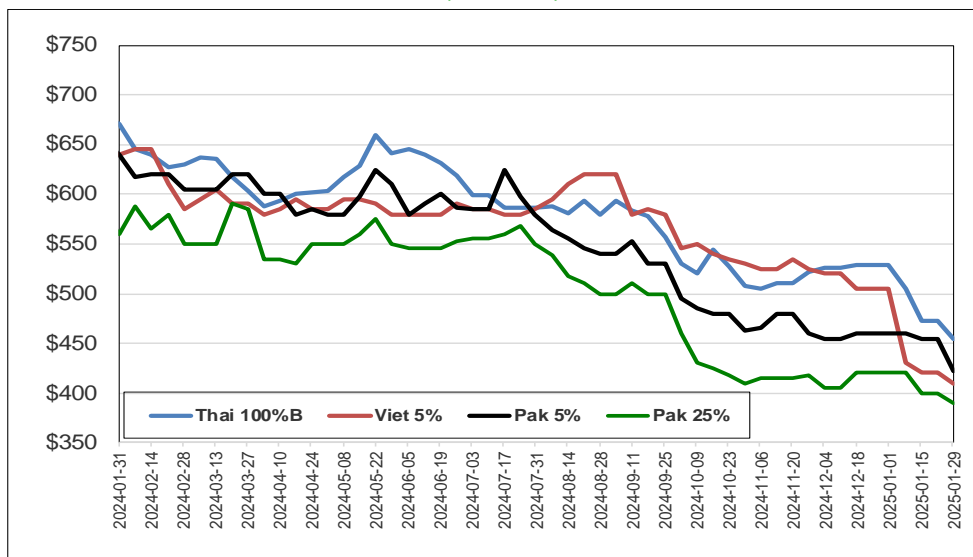
Campaign 2024/2025

From September 1st 2024 to January 29, 2025



International prices

(\$/tonnes)



Weekly prices

Milled rice international FOB quotes		
Exchange rate	€1 = \$1.0396	
Asian Markets	\$/t	€/t
Thai 100%B	455	438
Vietnam 5%	410	394
India 5%	425	409
Pakistan 5%	422	406
Pakistan 25%	390	375
Myanmar 5%	450	433
Pakistan Basmati S. Kernel	970	933
Pusa Basmati India	900	866
Other Markets	\$/t	€/t
Uruguay 5%	650	625
Argentina 5%	700	673
Brazil Type 1	680	654
USA LG 2/7% Fob US Gulf	not available	
California MG 1/4% - Med -	705	678