



## Rice industry and trade News



# *RiceNews*

Year 14°- n. 147  
February 2024  
Editor in chief  
Dr. Roberto Magnaghi



# News

## 2024 rice sowing survey (Source: Ente Risi Note)

We thank the 842 producers who contributed to the sowing survey, covering 17% of the total 2023 area. Overall, this results in an increase of almost 5,700 hectares (+2.7%) over the 2023 rice sowings, due to the increases recorded for Medium/Long A (+11,139 hectares) and Round (+3,302 hectares), which outweigh the decline in Long B (-8,780 hectares). Despite having received nearly a hundred more responses than in 2023, the Ente Nazionale Risi has decided to extend the survey until February 29.

Therefore, an update will be posted on the Ente Nazionale Risi's website in early March.

	Previsione Superfici 2024 (ettari)	Superfici 2023 (ettari)	Differenza	
			ettari	%
SELENIO	12.500	14.060	-1.560	-11,09%
CENTAURO	3.100	5.016	-1.916	-38,20%
ALTRI TONDI	40.700	33.922	6.778	19,98%
<b>TOTALE TONDO</b>	<b>56.300</b>	<b>52.998</b>	<b>3.302</b>	<b>6,23%</b>
VIALONE NANO	3.450	3.008	442	14,68%
LOTO E SIMILARI	46.400	30.014	16.386	54,59%
S.ANDREA	2.050	1.336	714	53,39%
ROMA E SIMILARI	1.300	11.804	-10.504	-88,99%
BALDO E SIMILARI	9.600	6.341	3.259	51,40%
ARBORIO E SIMILARI	15.650	20.138	-4.488	-22,29%
CARNAROLI E SIMILARI	23.500	24.509	-1.009	-4,12%
Varie Medio + Padano + Lido + Varie Lungo A	17.250	10.911	6.340	58,10%
<b>TOTALE MEDIO E LUNGO A</b>	<b>119.200</b>	<b>108.061</b>	<b>11.139</b>	<b>10,31%</b>
<b>LUNGO B</b>	<b>40.400</b>	<b>49.180</b>	<b>-8.780</b>	<b>-17,85%</b>
<b>TOTALE</b>	<b>215.900</b>	<b>210.239</b>	<b>5.661</b>	<b>2,69%</b>

# Food Safety

## Rapid Alert System

- A border rejection notification was sent by Netherlands concerning Chlorpyrifos-methyl (0.079 mg/kg – ppm) in round grain rice from India.
- A border rejection notification was sent by Ireland concerning Chlorpyrifos (0.059 mg/kg – ppm) in rice from Pakistan.
- An information notification for attention was sent by Slovakia concerning Acetamiprid (0.046 mg/kg – ppm) in Basmati rice from Pakistan.
- An alert notification was sent by Germany concerning mineral oil-like smell in rice from India, via the Netherlands.



# **Italian market**

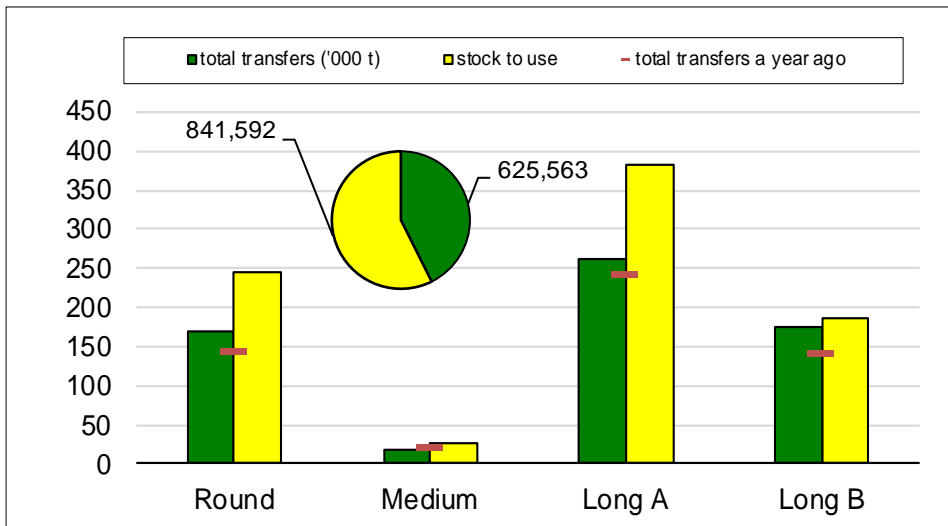
***Campaign 2023/2024***

***From September 1<sup>st</sup>, 2023 to January 30, 2024***



## Paddy rice transfers

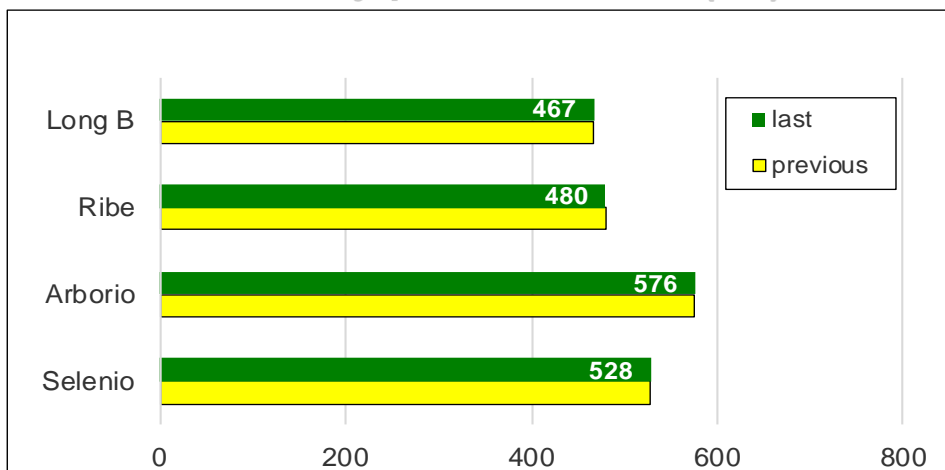
(in tonnes)



This week, 13,464 tonnes of "long A," 7,848 tonnes of "round," 5,346 tonnes of "long B," and 868 tonnes of "medium" were transferred, totaling 27,526 tonnes. Overall, transfers amounted to 625,563 tonnes and marked an increase of 71,372 tonnes (+13%) from the previous marketing year. "Round," "Long A" and "Long B" type paddy rice show increases of 18%, 8% and 21%, respectively, while "Medium" type paddy rice shows a 16% decrease.

Compared with two years ago, transfers are down 186,746 tonnes (-23%).

## Paddy prices Vercelli (€/t)



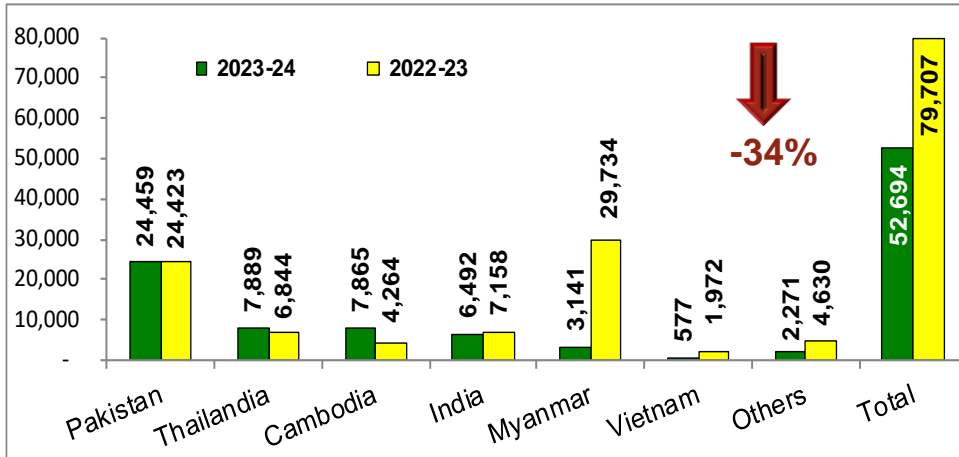
At the Vercelli Commodity Exchange there is no change in the reference quotations.



## Import: husked + milled

tonnes in milled rice equivalent

(Source: MAECI Agrim Licences)

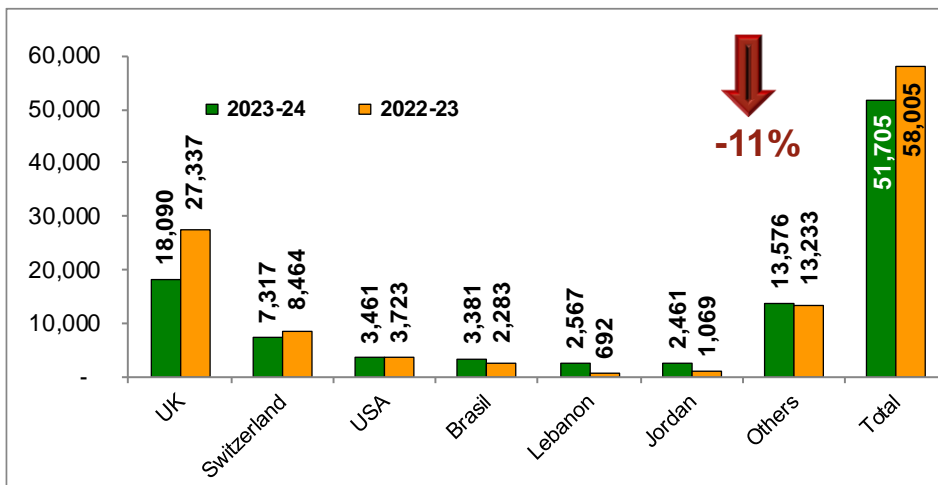


Imports amount to 52,694 tonnes, in milled equivalent and excluding paddy, down 27,013 tons (-34%) from last marketing year. Imports from Pakistan, at 24,459 tonnes, including 9,217 tonnes of Basmati rice, are at the same level as a year ago. This is followed by Thailand and Cambodia which, with more than 7,800 tonnes each, show increases of 15% and 84%, respectively. Imports from India, at 6,492 tonnes, including 848 tons of Basmati rice, are slightly down from the previous marketing year (-666 tonnes, -9%).

## Export: husked + milled

tonnes in milled rice equivalent

(Source: ENTE RISI Declaration)



During January exports remained, on average, at a level about 11% lower than last year. Exports to the UK, at 18,090 tonnes, are down 9,247 tonnes (-34%) and as much as 12,553 tonnes (-41%) compared to the 2021/2022 marketing year. Not considering the flows destined for the UK, which account for 35% of the total volume, exports would be up by 2,947 tonnes (+10%).



# **European Union market**

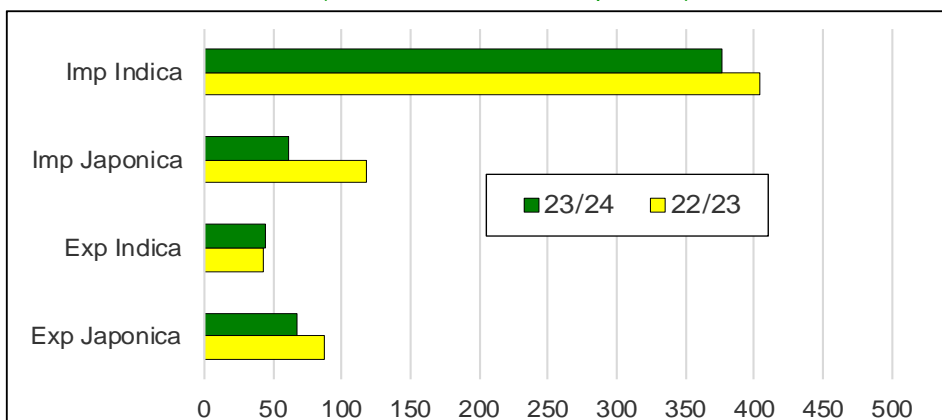
***Campaign 2023/2024***

***from September 1<sup>st</sup>, 2023 to January 27, 2024***



## Import Export EU

(*'000 tonnes milled rice equivalent*)

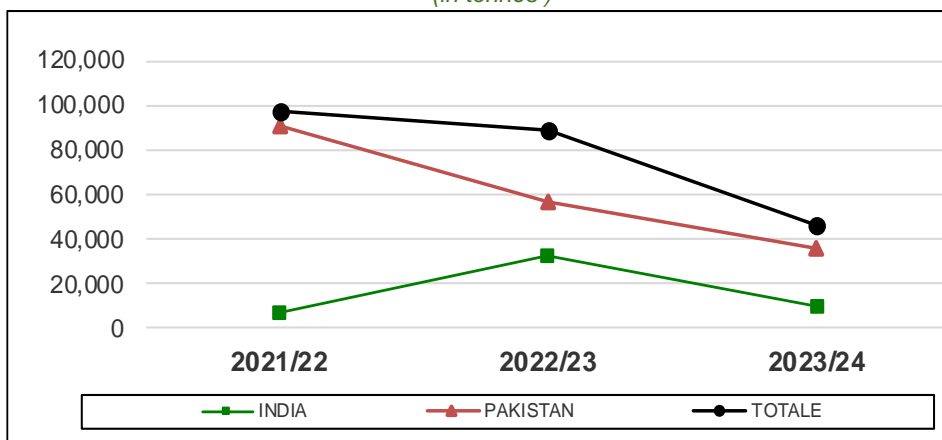


Imports into the European Union stand at about 438,100 tonnes, in milled equivalent, down about 83,000 tonnes (down 16%) from a year ago. Imports of paddy rice stand at 30 tonnes compared to 7,391 tonnes in the previous marketing year, imports of husked rice, at just over 95,800 tonnes, show a 40% decrease, and imports of semi-milled/milled rice, at about 342,200 tonnes, are down 3%.

Exports to third countries, in milled equivalent, drop from nearly 129,200 tonnes a year ago to about 110,500 tonnes now, resulting in a decline of about 18,700 tonnes (down 14%). The export of paddy rice, at 772 tonnes, is down 89%, that of husked rice, about 5,800 tonnes, shows a 48% decrease, and that of semi-milled/milled rice, nearly 104,000 tonnes, shows a 6% decrease.

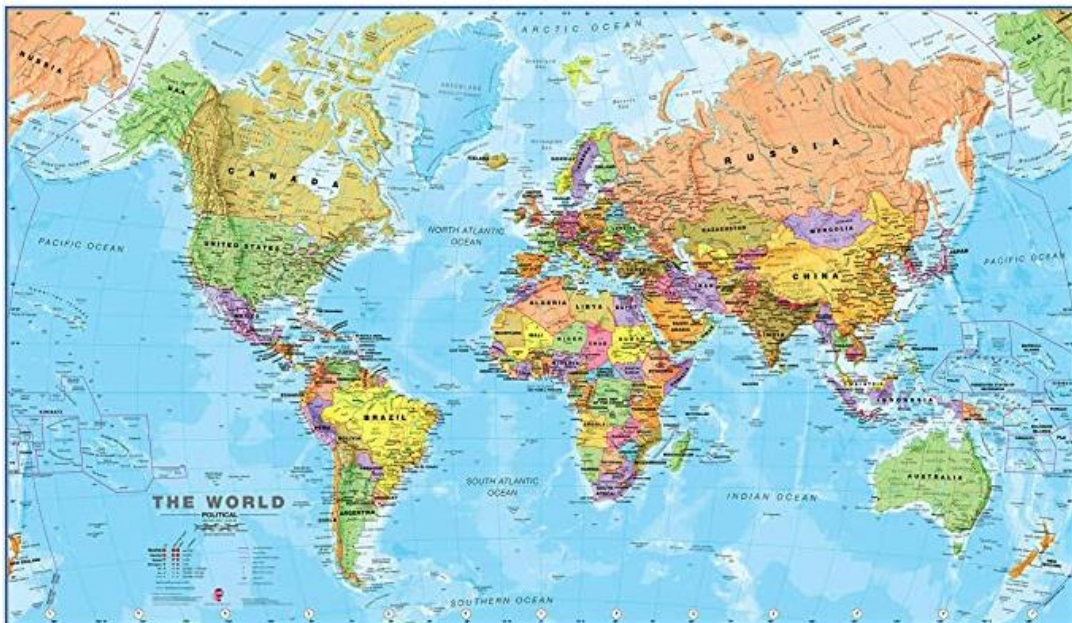
## Basmati husked rice imports

(*in tonnes*)



Basmati husked rice imports, at 46,037 tonnes, are down 42,914 tonnes (-48%) from the previous marketing year. Basmati rice imports of Pakistani origin amounted to 35,667 tonnes and showed a decrease of 20,934 tonnes (-37%), while imports of Indian origin of 10,370 tonnes showed a decrease of 21,980 tonnes (-68%). Compared to two years ago, imports of Basmati husked rice are down 51,707 tonnes (-53%).





# **International markets**

***Campaign 2023/2024***

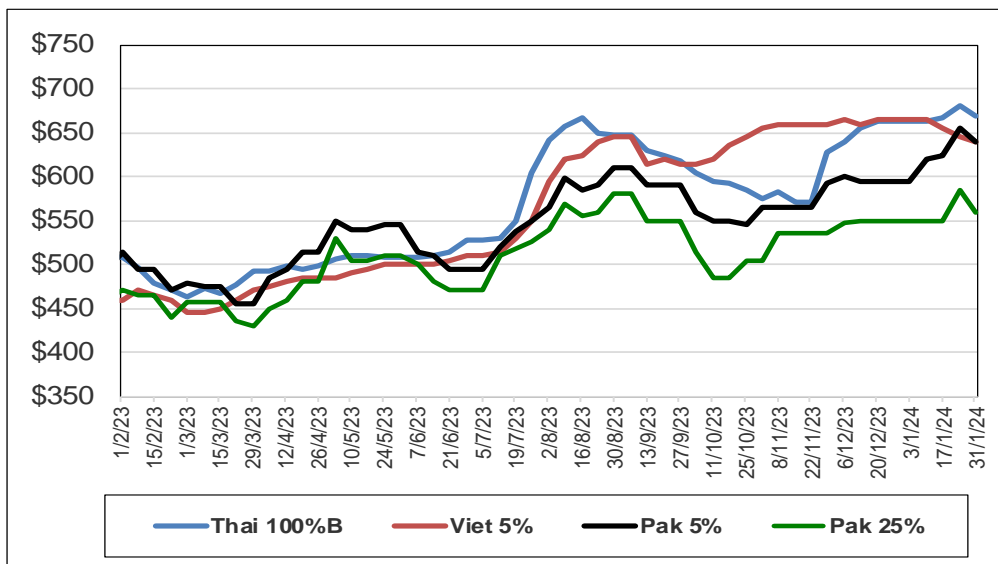
***From September 1, 2023 to January 31, 2024***





## International prices

(\$/tonnes)



## Weekly prices

Milled rice international FOB quotes		
Exchange rate	€1 = \$1.0837	
Asian Markets	\$/t	€/t
Thai 100%B	670	618
Vietnam 5%	640	591
India 5%	divieto export	N.A.
Pakistan 5%	640	591
Pakistan 25%	560	517
Myanmar 5%	635	586
Pakistan Basmati S. Kernel	1,015	937
India Basmati min.exp.price	950	877
Other Markets	\$/t	€/t
Uruguay 5%	820	757
Argentina 5%	740	683
Brasile Type 1	875	807
USA LG 2/4% Fob US Gulf	785	724
California MG 1/4% - Med -	950	877

Source: Creed Rice Co