



Rice industry and trade News



RiceNews

Year 14°- n. 148
March 2024
Editor in chief
Dr. Roberto Magnaghi



News

Duty on husked rice decreased to €30/ton (Source: *Ente Risi Note*)

From Sept. 1, 2023 to Feb. 29, 2024, imports of husked rice, excluding Basmati, stood at 105,172 tons.

As a result, as of March 7, 2024, the duty on husked rice was decreased from 42.50 €/t to 30 €/t.

The European Commission wants to improve the CAP (Source: *Ente Risi Note*)

The European Commission has prepared a questionnaire, the completion of which should not should take more than 20 minutes, aimed at understanding the burden imposed on farmers by the procedures and rules related to financial support under the Common Agricultural Policy (CAP) as well as by other EU rules for food and agriculture in the EU.

The objective would be to identify sources of concern and complexity in the way in which these policies and schemes are applied in EU countries, to identify areas where improvements could be made.

The results of the survey will be published in the fall.

The questionnaire, while aimed at farmers, can be filled out by anyone and is available at the following link [online questionnaire](#).

Rules and Calls for bids

[Commission implementing regulation \(EU\) 2024/840 of 6 March](#) (OJ L 7/3/2024)

fixing the import duties applicable to certain types of husked rice from 7 March 2024.

Food Safety

Rapid Alert System

- A border rejection notification was sent by Spain concerning Aflatoxin B1 ($4.7 \mu\text{g}/\text{kg} \pm 24.2 \% \mu\text{g}/\text{kg} - \text{ppb}$) in rice from Pakistan.
- A border rejection notification was sent by Croatia concerning Chlorpyrifos-ethyl ($0.037 \pm 0.019 \text{ mg}/\text{kg} - \text{ppm}$) in Basmati rice from Pakistan.
- A border rejection notification was sent by Netherlands concerning GMO unauthorised in rice noodle from China.
- A border rejection notification was sent by Spain concerning Aflatoxin B1 ($12.5 \mu\text{g}/\text{kg} \pm 24.2 \% \mu\text{g}/\text{kg} - \text{ppb}$) and Aflatoxins ($13.30 \mu\text{g}/\text{kg} \pm 24.2 \% \mu\text{g}/\text{kg} - \text{ppb}$) in rice from Pakistan.
- A border rejection notification was sent by Germany concerning Acetamiprid ($0.041 \text{ mg}/\text{kg} - \text{ppm}$) and Imidacloprid ($0.034 \text{ mg}/\text{kg} - \text{ppm}$) in rice from Pakistan.
- A border rejection notification was sent by France concerning Thiamethoxam ($0.014 \pm 0.007 \text{ mg}/\text{kg} - \text{ppm}$) and Tricyclazole ($0.011 \pm 0.006 \text{ mg}/\text{kg} - \text{ppm}$) in rice from India.



Italian market

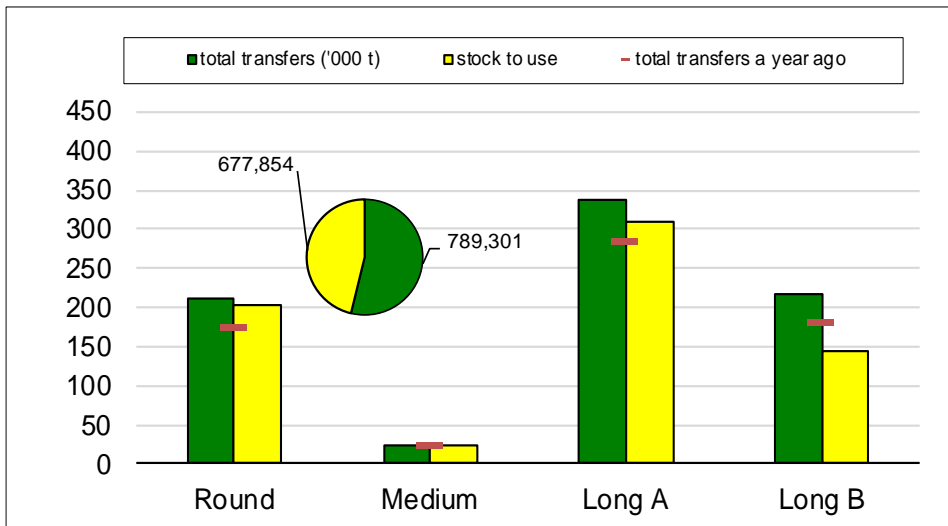
Campaign 2023/2024

From September 1st, 2023 to March 5, 2024



Paddy rice transfers

(in tonnes)

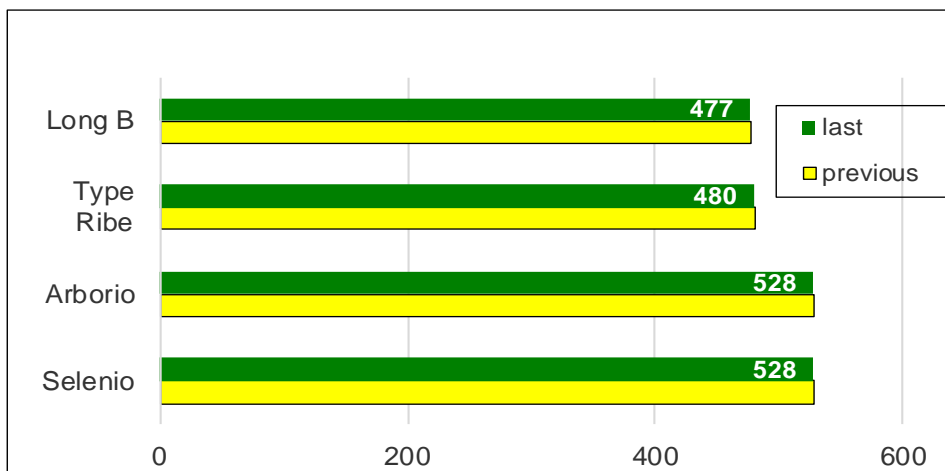


In the last week, paddy rice transfers included 13,239 tonnes of "long A," 9,723 tonnes of "long B," 7,754 tonnes of "round," and 614 tonnes of "medium," totaling 31,330 tonnes.

The total volume transferred stands at 789,301 tonnes, up 119,314 tonnes (+18%) from last year's campaign. 677,854 tonnes remain to be placed.

Compared to two years ago, transfers are down 201,827 tonnes (-20%).

Paddy prices Vercelli (€/t)



At the Vercelli Commodity Exchange there is no change in the reference quotations.

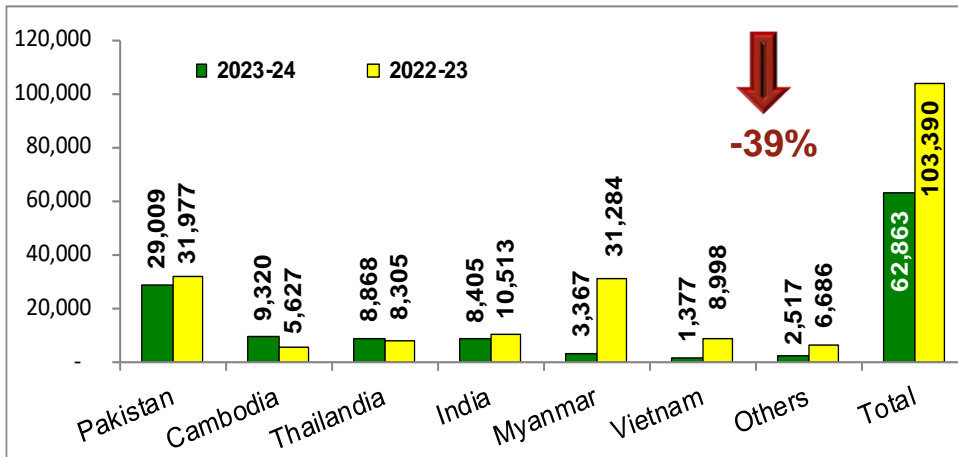
The Type Ribe quotation results in nominal.



Import: husked + milled

tonnes in milled rice equivalent

(Source: MAECI Agrim Licences)



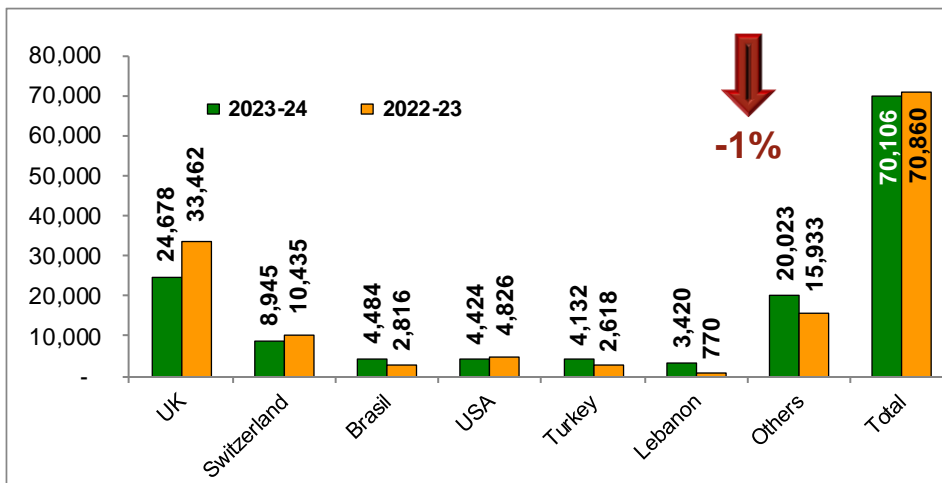
Import license applications stand at a volume of 62,863 tonnes, in milled equivalent and paddy excluded, showing a decline of 40,527 tonnes (-39%) compared to the same date a year ago.

Imports of Indica-type rice, at 60,776 tonnes, are down by 24,031 tonnes (-28%); imports of Japonica-type rice, at 2,087 tonnes, show a contraction of 16,496 tonnes (-89%) compared to the volume imported last year.

Export: husked + milled

tonnes in milled rice equivalent

(Source: ENTE RISI Declaration)



Export declarations were issued for a quantity of 70,106 tonnes, in milled equivalent, marking a decrease of 754 tonnes (-1%) from the previous marketing year.

Exports of "round" rice, "medium" rice and "long B" rice, amounting to 22,938 tonnes, 2,778 tonnes and 9,200 tonnes, respectively, marked declines of 18%, 31% and 8%.

Bucking the trend is the export of "long A" rice, which, placing at 35,190 tonnes, is up by 6,335 tonnes (+22%).



European Union market

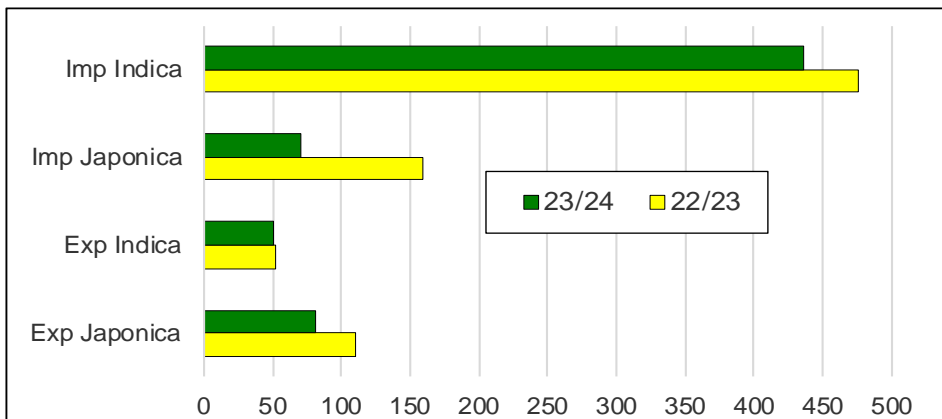
Campaign 2023/2024

from September 1st, 2023 to February 24, 2024



Import Export EU

(*'000 tonnes milled rice equivalent*)



Imports into the EU amount to nearly 506,000 tonnes, in milled equivalent, down more than 130,100 tonnes (-21%) from last year.

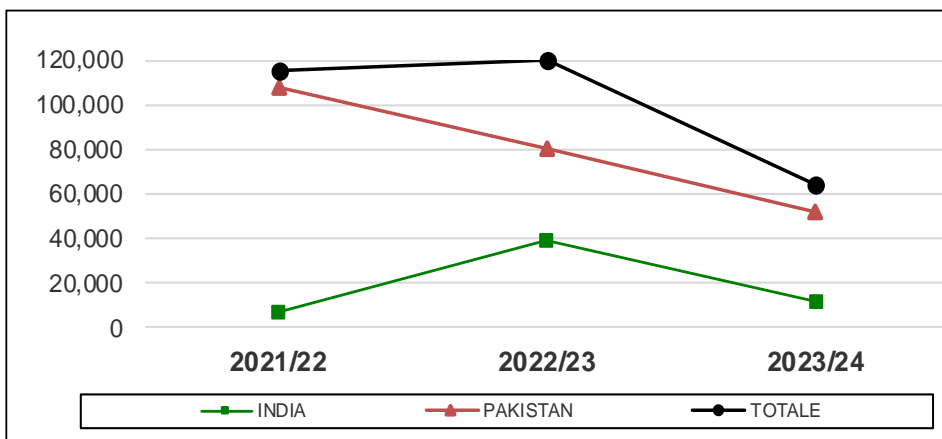
With nearly 33,000 tonnes, Pakistan is the leading supplier of husked rice. With nearly 106,000 tonnes of semi-milled/milled rice, including about 98,300 tonnes of Indica type, Cambodia appears to be the top supplier country.

Among member states, France is the country that imported the largest volumes of Japonica rice, about 11,000 tonnes, out of a total of about 70,000 tonnes, followed by Spain with about 10,000 tonnes. As for Indica rice, at about 82,700 tonnes, it is the Netherlands that holds the top spot for imports, followed by France with nearly 77,300 tonnes.

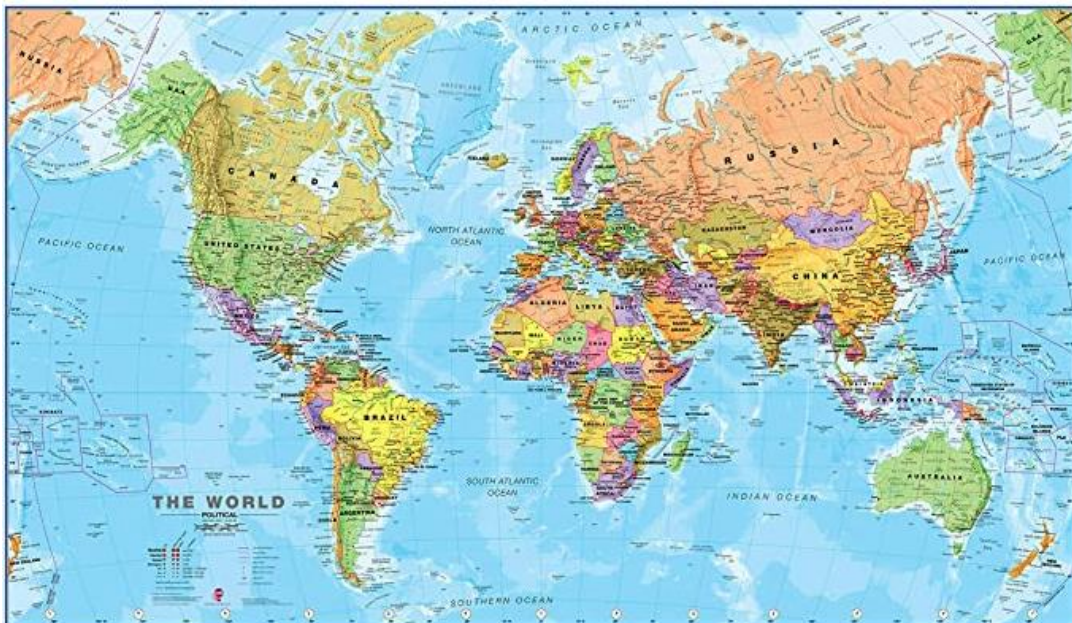
Total exports stand at about 131,900 tonnes, down nearly 29,200 tonnes (-18%) from last year.

Basmati husked rice imports

(*in tonnes*)



The 27 EU countries have applied for duty-free import licenses for Basmati husked rice in the amount of 64,180 tonnes, down 55,679 tonnes (-46%) from a year ago.



International markets

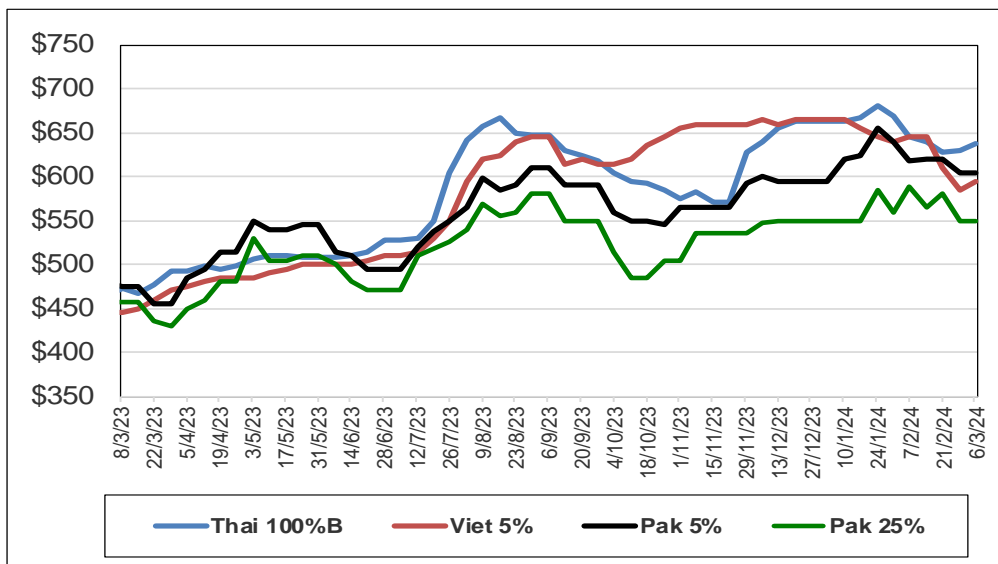
Campaign 2023/2024

From September 1, 2023 to March 6, 2024



International prices

(\$/tonnes)



Weekly prices

Milled rice international FOB quotes		
<i>Exchange rate</i>	€1 = \$1.0874	
Asian Markets	\$/t	€/t
Thai 100%B	637	586
Vietnam 5%	595	547
India 5%	divieto export	N.A.
Pakistan 5%	605	556
Pakistan 25%	550	506
Myanmar 5%	635	584
Pakistan Basmati S. Kernel	1,015	933
India Basmati min.exp.price	950	874
Other Markets	\$/t	€/t
Uruguay 5%	740	681
Argentina 5%	720	662
Brasile Type 1	800	736
USA LG 2/4% Fob US Gulf	820	754
California MG 1/4% - Med -	950	874

Source: Creed Rice Co