



News

Reduced duty for husked rice to EUR 30 per tonne (Source: Ente Risi note)

The EU regulation changing the duty on husked rice from EUR 65 to EUR 30 per tonne as of 8 March 2023 has been published.

Unit amounts of coupled support area measures for 2022 published (Source: AGEA)

In Circular AGEA.12923.2023 dated Feb. 22, 2023, AGEA published the amounts of the area measures of coupled support for 2022, for rice the amount is €151.80/ha.

Link: bit.ly/3J8jX4p

Survey update with planting intentions for 2023 published (Source: Rice Board)

Ente Nazionale Risi has updated the survey with planting intentions for 2023, which is based on input from 840 rice growers representing 23 percent of the total area for 2022. Overall, this results in an area of 211,000 hectares, a decrease of 7,421 hectares (down 3.4 percent) from the area planted to rice last year. The round (-8,560 hectares) and long B (-4,994 hectares) types would appear to be declining, while the area for the Medium/Long A type would be increasing (+6,133 hectares).

International Markets

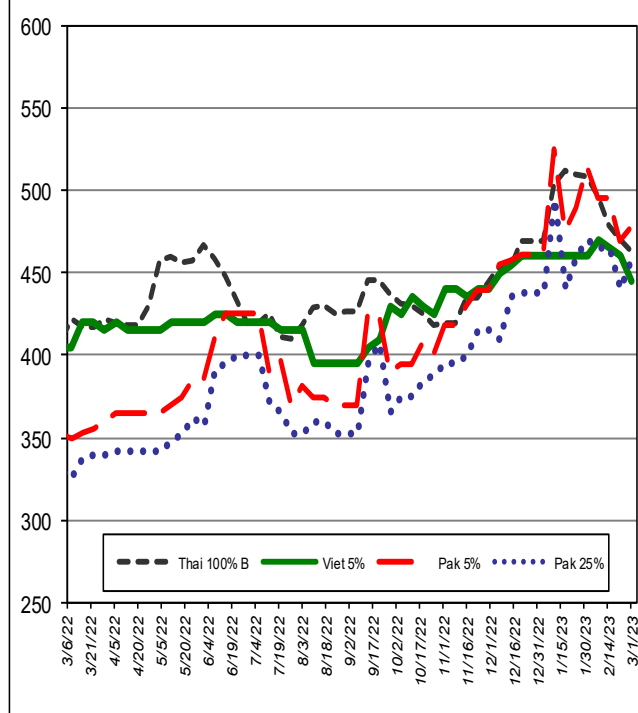


Milled rice international FOB quotes

Exchange rate 1 € = 1.0684\$

Asian Markets	\$/t	€/t
Thai 100%B	464	434
Vietnam 5%	445	417
India 5%	435	407
Pakistan 5%	478	447
Pakistan 25%	458	429
Myanmar 5%	505	473
Pakistan Basmati S.Kernel	1,285	1,203
India Basmati Pusa	1,550	1,451
Other Markets	\$/t	€/t
Uruguay 5%	575	538
Argentina 5%	530	496
Brasile Type 1	610	571
USA LG 2/4% Fob Bulk Nola	780	730
California MG 1/4% Med	1,650	1,544

Weekly prices (\$/t)



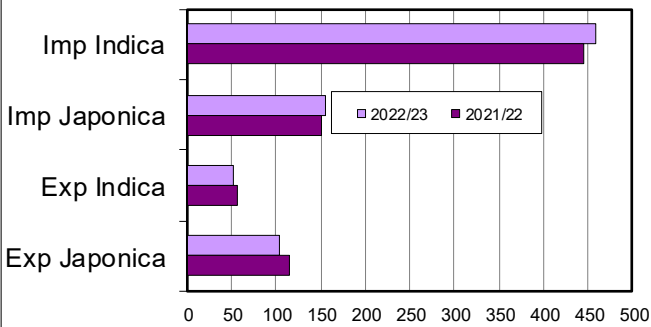
Food Safety

Rapid Alert System (Source: EFSA)

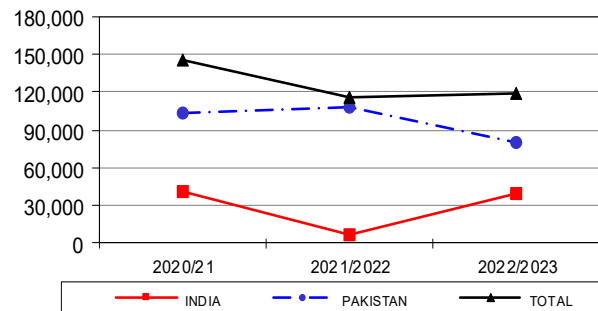
- A border rejection was sent by Netherlands concerning Aflatoxins B1 (12 µg/kg - ppb) in rice from Pakistan.
- A border rejection was sent by Netherlands concerning Ochratoxin A (24 µg/kg - ppb) in rice from India.

European Market

Import Export EU ('000 tonnes milled rice equivalent)



Basmati husked rice imports (in tonnes)



In focus

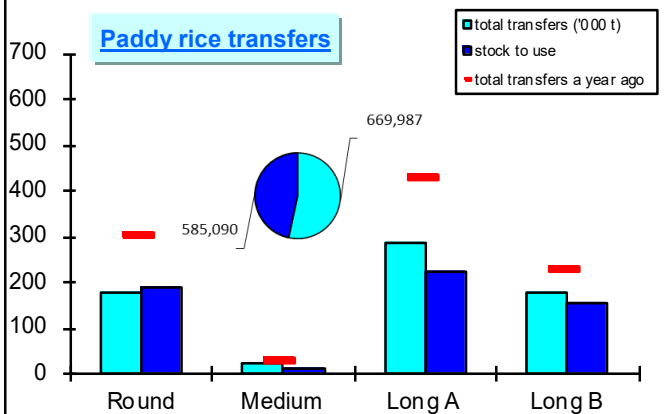
Data provided by the European Commission, based on the quantities actually cleared through customs, show that the 27 EU countries imported about 614,000 tonnes, in milled equivalent, up from about 596,200 tonnes a year ago, marking an increase of 17,875 tonnes (+3%). Japonica rice imports, about 154,900 tonnes, are up just over 5,000 tonnes (+3.4%) from the previous marketing year, while Indica rice imports, about 459,100 tonnes, are up about 12,800 tonnes (+2.9%).

Total imports of Basmati husked rice amount about 119,800 tonnes, of which about 80,300 tonnes are of Pakistani origin and about 39,500 tonnes are of Indian origin, resulting in an increase of about 4,500 tonnes (+3.7%) over the previous marketing year.

Exports stand at about 155,300 tonnes, in milled equivalent, down 14,396 tonnes (-8.5 %) from the last marketing year.

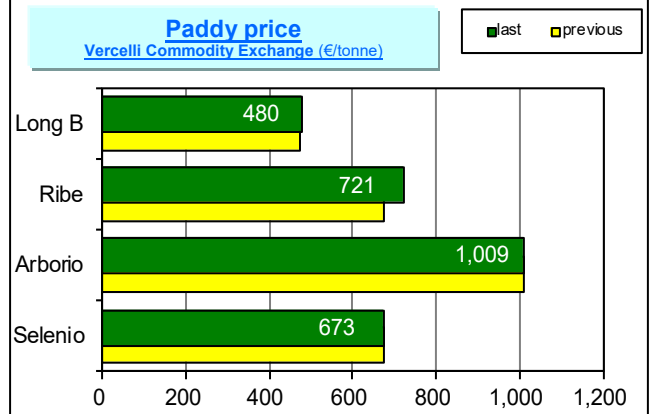
Italian Market

Paddy rice transfers



Paddy price

Vercelli Commodity Exchange (€/tonne)



In focus

In the last week, paddy rice transfers involved 27,445 tonnes, including: 9,047 of "long A," 8,795 of "round," 8,635 of "long B," and 968 of "medium." The total volume of transfers stands at 669,987 tonnes compared to 991,128 tonnes last year, showing a decrease of 321,141 tonnes (-32%). 585,090 tonnes remain to be placed.

At the Vercelli Exchange there is an increase of 48 €/t for Ribe Type and 8 €/t for Long B.

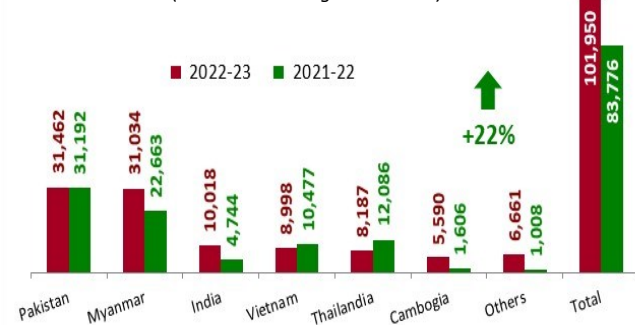
Operators applied for import licenses for husked and semi-milled/milled rice for a volume of 101,950 tonnes, in milled equivalent, marking an increase of nearly 18,200 tonnes (+22%) over the previous marketing year.

The table on volumes actually cleared through customs will be published again only when the table prepared by the European Commission is updated.

Exports amounted to 69,739 tonnes, in milled equivalent, a decrease of about 26,200 tonnes (-27%) from the previous campaign.

Import: husked + milled - till February 24, 2023

(tonnes in milled rice equivalent)
(Source: MAECI Agrim Licences)



Export: husked + milled - till February 24, 2023

(tonnes in milled rice equivalent)
(Source: Ente Risi Declarations)

