



Rice sector and trade News



Year 15°- n. 169
December 2025
Editor in chief
Dr. Roberto Magnaghi



News

Provisional balance sheet for the 2025/2026 marketing year

(Source: Ente Nazionale Risi Note)

The Board of Directors of Ente Nazionale Risi has approved the final balance sheet for the 2025/2026 marketing year and the provisional balance sheet for the 2024/2025 marketing year.

To consult the balance sheet click on the following link: [balance sheet](#)

India and the EU intend to conclude negotiations on a free trade agreement by 2025

(Source: Ente Nazionale Risi Note)

According to a press release published by the European Commission on 25 November, India and the European Union intend to conclude negotiations on a free trade agreement by 2025. The parties held consultations on 19 November, highlighting the very positive state of EU-India relations, including the historic visit of the College of Commissioners to India in February, the first EU-India Strategic Dialogue in Brussels held in June by the High Representative of the Union for Foreign Affairs and Security Policy, Kallas, and the Indian Minister of Foreign Affairs, Jaishankar, and the adoption by the EU of the joint communication on the strategic agenda for India in September.

Link to the press release:

[EU-India: Joint Press Release on the 11th Foreign Policy and Security Consultations and the 6th Strategic Partnership Review Meeting in Brussels | EEAS](#)

Turkiye's Ipsala rice receive EU geographical indication status

(Source: Note Ente Nazionale Risi)

The geographical indication "İpsala Pirinci" (PDO) is hereby entered in the Union register of geographical indications.

Ipsala rice is cultivated in the water-rich plains of the Ipsala district in northwestern Edirne province.

[Link to Commission Implementing Regulation \(EU\) 2025/2317](#)

Food Safety

Rapid Alert System

- A border rejection notification was sent by France concerning Imidacloprid (0.012 ± 0.006 mg/kg - ppm) in Basmati rice from Pakistan.



Italian market

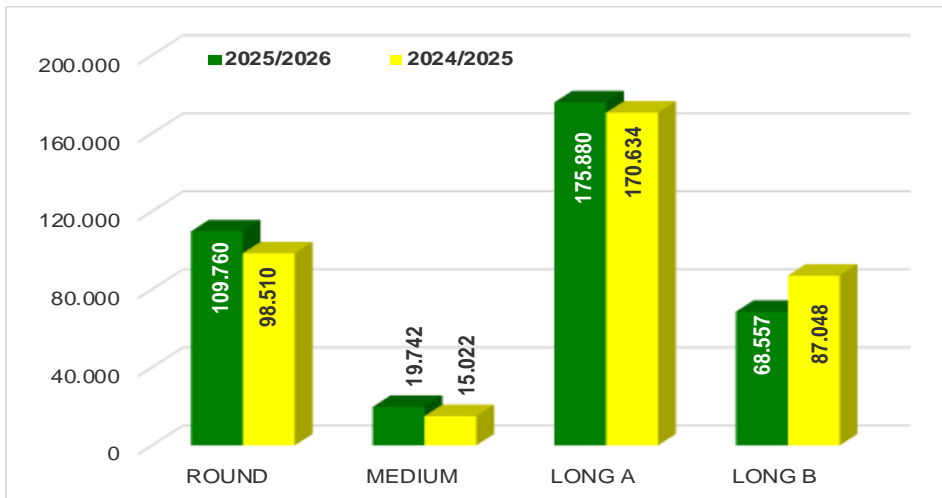
Campaign 2025/2026

From September 1st 2025 to November 25, 2025



Paddy rice transfers

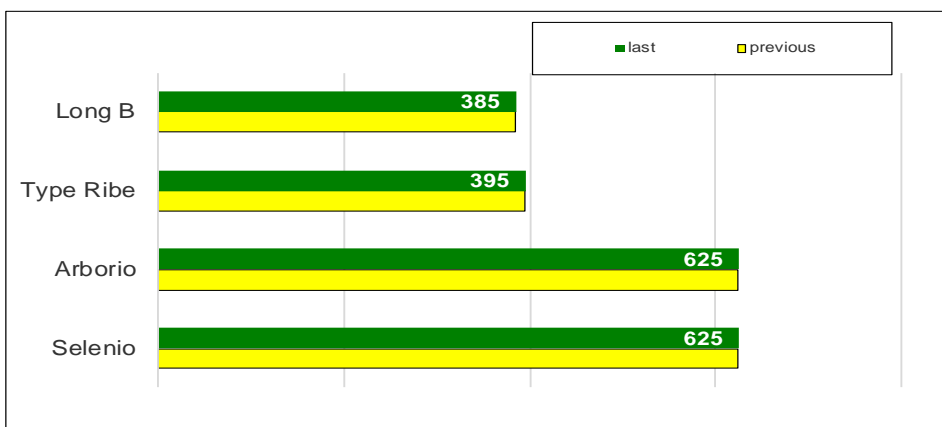
(in tonnes)



This week, 15,556 tonnes of “long A”, 11,398 tonnes of “round”, 4,412 tonnes of “long B” and 1,183 tonnes of “medium” were transferred, for a total of 32,549 tonnes.

Overall, transfers amounted to 373,939 tonnes, an increase of 2,725 tonnes (+1%) compared to the previous season.

Paddy prices Vercelli (€/t)



At the Vercelli Commodity Exchange no changes in reference prices were recorded.

The Type Ribe, Arborio and Long B quotations's are “Nominal”.

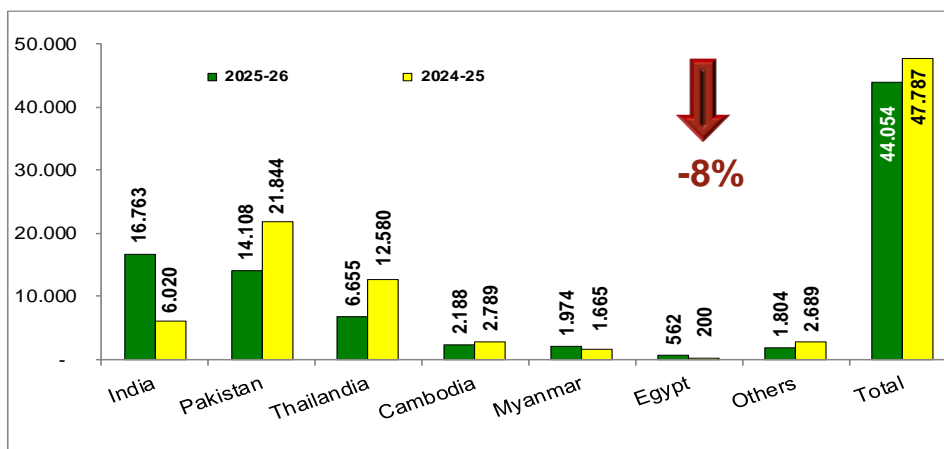
(*) weighted average of the maximum quotations for the varieties Kinder PV, Ely PV and Ronaldo



Import: husked + milled

tonnes in milled rice equivalent

(Source: MAECI Agrim Licences)



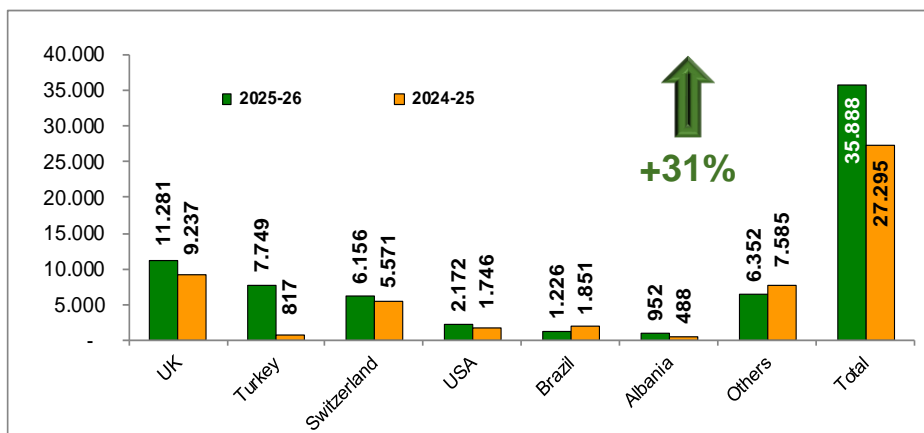
Import licences were issued for a quantity of 44,054 tonnes, in milled equivalent, down by 3,733 tonnes (-8%) compared to the previous marketing year.

Excluding imports of Basmati rice from India and Pakistan, amounting to 12,385 and 5,420 tonnes respectively and accounting for 40% of the total licences issued, the main trading partners are Pakistan with 8,688 tonnes, Thailand with 6,655 tonnes, India with 4,378 tonnes, Cambodia with 2,188 tonnes and Myanmar with 1,974 tonnes.

Export: husked + milled

tonnes in milled rice equivalent

(Source: ENTE RISI Declaration)



ENR export declarations were issued for a quantity of 35,888 tonnes, compared to 27,295 tonnes a year ago, marking an increase of 8,593 tonnes (+31%).

The most exported type of rice was "Long A" (19,750 tonnes), followed by "round" rice (10,703 tonnes), "Long B" rice (4,624 tonnes) and "medium" rice (811 tonnes).

All types increased by 44%, 13%, 21% and 169% respectively.



European Union market

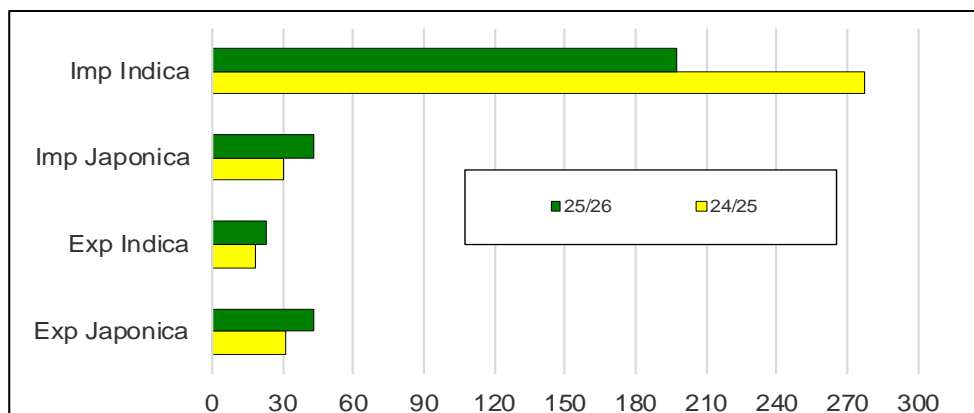
Campaign 2025/2026

From September 1st 2025 to November 23, 2025



Import Export EU

(‘000 tonnes milled rice equivalent)



As of November 23, the volumes actually cleared through customs amounted to just over 241,000 tonnes, in milled rice equivalent, down by almost 66,300 tonnes (-22%) compared to the figure recorded on November 17, 2024.

Spain was the country that imported the largest volumes of Japonica rice, approximately 11,100 tonnes out of a total of over 43,100 tonnes, followed by Bulgaria with more than 7,700 tonnes and Germany and the Netherlands with approximately 4,700 tonnes each.

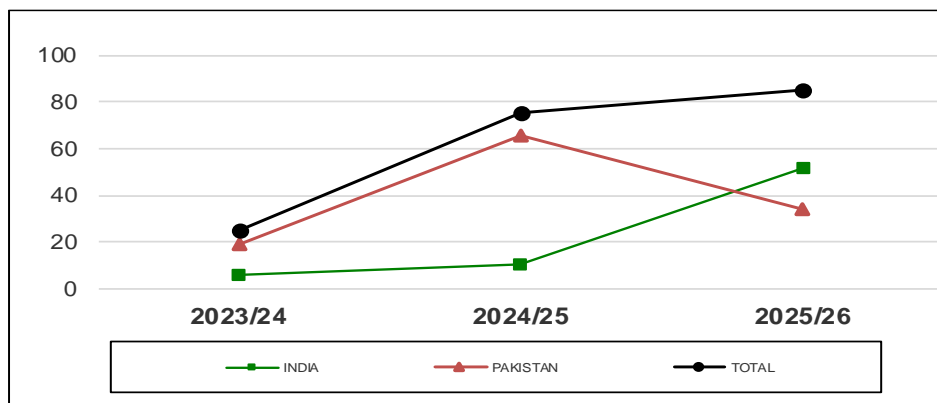
As regards Indica rice, with more than 53,300 tonnes out of a total of approximately 197,900 tonnes, the Netherlands holds the record for imports, followed by Italy (36,113 tonnes), Portugal (23,533 tonnes) and Spain (20,477 tonnes).

Total exports amounted to almost 66,000 tonnes, an increase of approximately 16,000 tonnes (+32%) compared to last year.

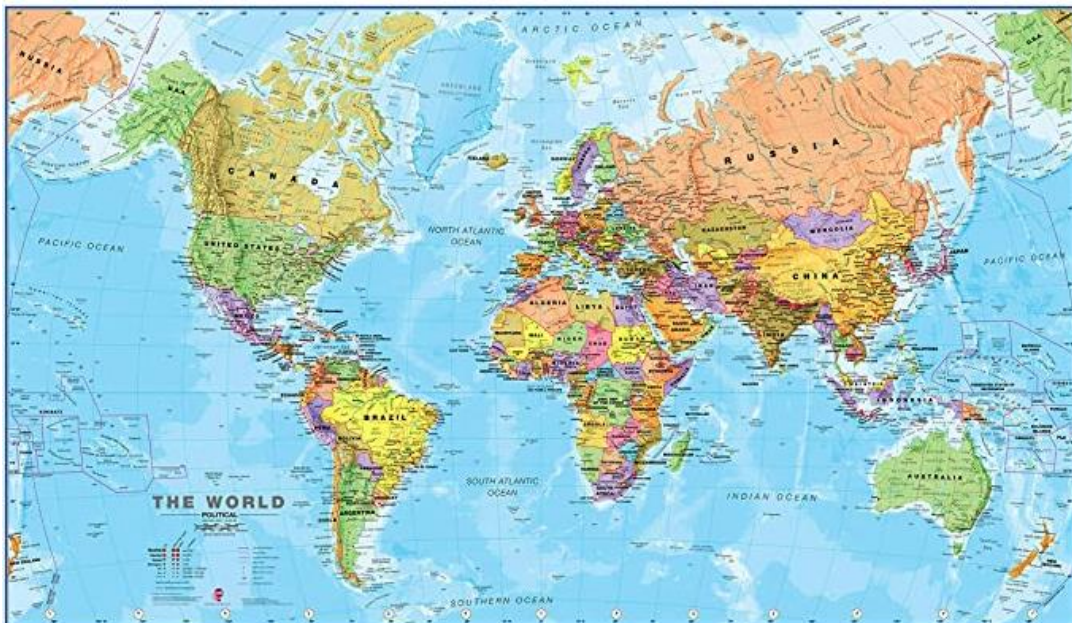
Exports of Japonica rice, almost 43,000 tonnes, are up 38%, while those of Indica rice, around 23,000 tonnes, are up 23%.

Basmati husked rice imports

(‘000 tonnes)



The 27 countries of the European Union have requested import licences for 85,484 tonnes of semi-milled Basmati rice, an increase of 10,071 tonnes (+13%) compared to the previous marketing year. Italy is the main importer of Basmati rice with 27,380 tonnes, followed by the Netherlands with 19,187 tonnes and France with 16,782 tonnes.



International markets

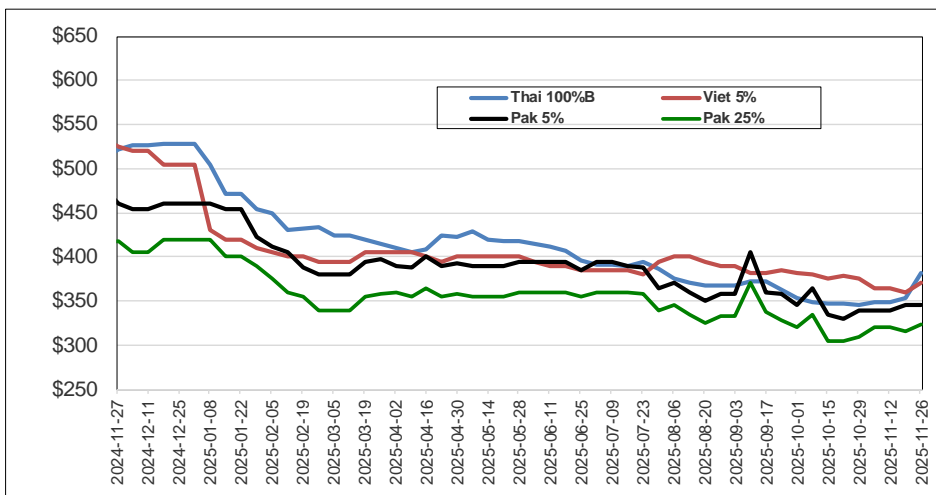
Campaign 2025/2026

From September 1st 2025 to November 26, 2025



International prices

(\$/tonnes)



Weekly prices

Milled rice international FOB quotes		
Exchange rate	€1 = \$1,1577	
Asian Markets	\$/t	€/t
Thai 100%B	381	329
Vietnam 5%	370	320
India 5%	350	302
Pakistan 5%	345	298
Pakistan 25%	323	279
Myanmar 5%	330	285
Pakistan Basmati S. Kernel	1.040	898
Pusa Basmati India	925	799
Other Markets	\$/t	€/t
Uruguay 5%	450	389
Argentina 5%	380	328
Brazil Type 1	470	406
USA LG 2/4% Fob Laredo TX	600	518
California MG 1/4% - Med -	850	734