



Rice sector and trade News



RiceNews

Year 16°- n. 170
January 2026
Editor in chief
Dr. Roberto Magnaghi



News

EU-Mercosur agreement: the pitfalls for the Italian rice

(Source: Ente Risi note)

Sector Mercosur's production potential is six times higher than that of the European Union: we are talking about 15 million tonnes of paddy rice compared to only 2.5 million produced in the old continent. In this scenario, the country that most directly competes with Italy is Uruguay, which produces around 1.5 million tonnes of paddy rice – a figure equivalent to Italy's average production – and exports 95% of its harvest. Paraguay has a similar dynamic, while Brazil, despite accounting for 75% of the area's production, allocates almost all of its product to domestic consumption. Argentina, on the other hand, occupies an intermediate position, exporting 40% of its rice.

The agreement between the EU and Mercosur, guaranteeing zero-duty access for South American rice without similar treatment for European products, represents a real threat. Although the initial quota is 10,000 tonnes (with a gradual increase to 60,000), the fear is that this quota will further burden a market already under pressure from imports facilitated by Least Developed Countries (LDCs).

In fact, although the volume is not enormous, considering that the European Union imported 1.7 million tonnes of milled rice in the last marketing year, the quantity granted to Mercosur at zero duty will increase the pressure on our product, which is already suffering today, considering that more than 60% of imported rice enjoys tariff concessions, almost always total; which means exemption from duty.

In this regard, the President of Ente Nazionale Risi, Natalia Bobba, has expressed a firm position: "This agreement does not protect our rice farmers because the European Commission seems to be ignoring the strong bad feeling in the sector, which is threatened by the lack of reciprocity and by subsidised imports from countries that do not have the same environmental, production and economic standards as Europe. It is essential that products obtained without complying with the same food safety standards guaranteed by our companies do not enter the Union. Ente Nazionale Risi will make every effort to ensure that real guarantees are introduced to protect our production with effective safeguard clauses and efficient control systems by the authorities responsible for products imported into the EU."

The challenge, therefore, also concerns the fairness of the rules. Without this alignment, rice grown in Italy – already penalised by some of the highest production costs in the world due to regulatory constraints and labour quality – would find itself competing at an unsustainable disadvantage.



News

Public notice published for participation in the second edition of Risò - The International Rice Festival, to be held in Vercelli from 11 to 14 September 2026

(Source: Ente Risi Note)

Public notice published for participation as a sponsor in the second edition of Risò - The International Rice Festival, to be held in Vercelli in September 2026.

Risò will be an opportunity to promote our product par excellence, rice, which makes us the leading producers in Italy and Europe.

The deadline for expressions of interest is 30 January 2026.

[Link to the public notice of participation](#)

Origin labelling for rice extended until December 31, 2026

(Source: Ente Risi Note)

A decree is currently being published that extends the mandatory provisions for indicating the origin on the label for various products, including rice.

Bulgaria joined the Eurozone

(Source: Ente Risi Note)

On January 1st 2026, Bulgaria will join the Eurozone, becoming the 21st Member State to use the common currency.

The conversion rate for the Bulgarian lev has been set at 1.95583 (BGN) to 1 euro (EUR).

Food Safety

Rapid Alert System

- A border rejection notification was sent by Poland concerning no CHED-D document submitted in the TRACES-NT system for rice from Pakistan via Ukraine.
- A border rejection notification was sent by Poland concerning no CHED-D document submitted in the TRACES-NT system for rice from India via Ukraine.
- A border rejection notification was sent by France concerning Thiametoxam (0.011 ± 0.006 mg/kg – ppm) in rice from India.
- A border rejection notification was sent by Malta concerning Tricyclazole (0.027 ± 0.014 mg/kg – ppm) in rice from India.
- An information notification for follow up was sent by Denmark concerning weevils in organic porridge rice from Italy.
- An information notification for attention was sent by Poland concerning Hexaconazole (0.035 ± 0.018 mg/kg - ppm) in brown rice from Paraguay.



Italian market

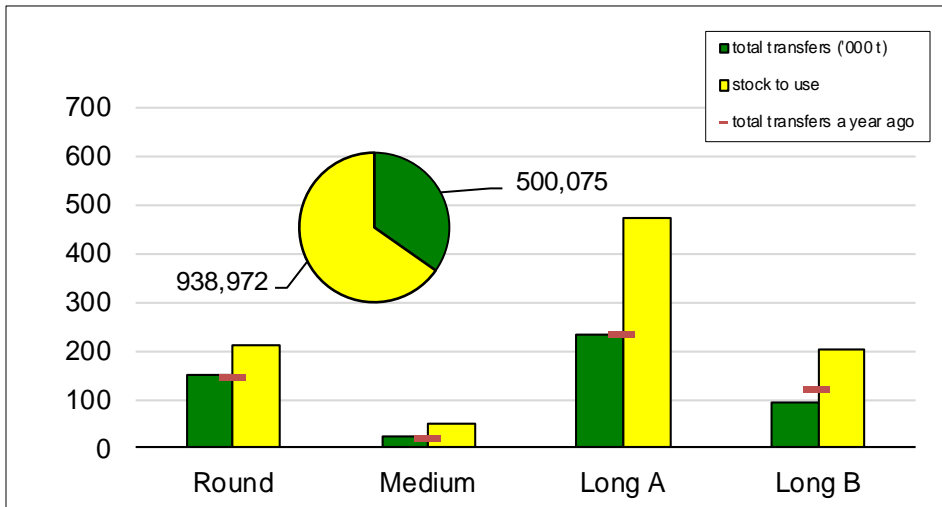
Campaign 2025/2026

From September 1st 2025 to January 6, 2026



Paddy rice transfers

(in tonnes)



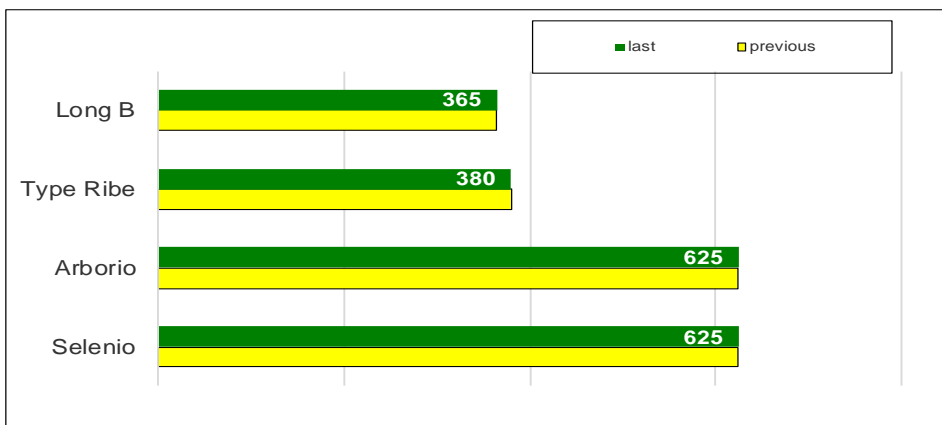
During the first week of January 2026, paddy rice transfers amounted to 1,183 tonnes.

Since the beginning of the marketing year, 500,075 tonnes have been placed on the market, down 23,275 tonnes (-4%) compared to a year ago.

This represents 35% of the available for sale, compared to 37% in the previous marketing year.

938,972 tonnes remain to be placed on the market.

Paddy prices Vercelli (€/t)



During the Christmas holidays, the Vercelli Commodities Exchange was closed, so we are reporting the chart published in the last issue of December 2025.

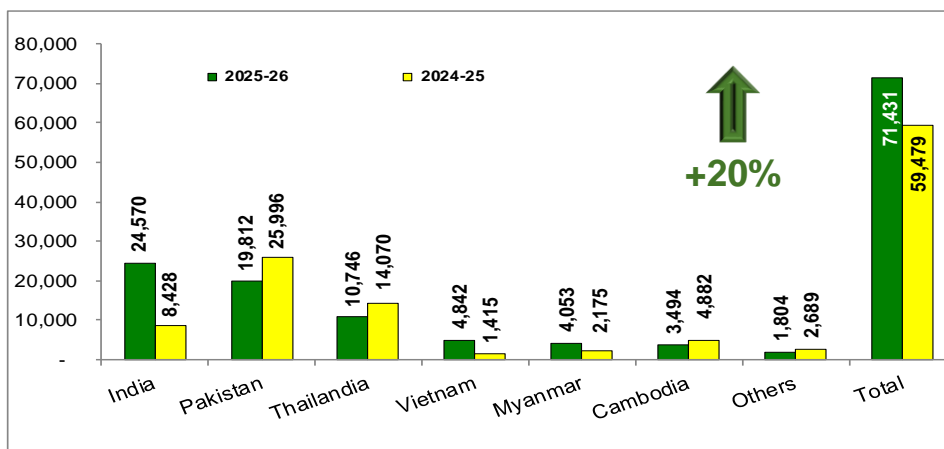
(*) weighted average of the maximum quotations for the varieties Kinder PV, Ely PV and Ronaldo



Import: husked + milled

tonnes in milled rice equivalent

(Source: MAECI Agrim Licences)



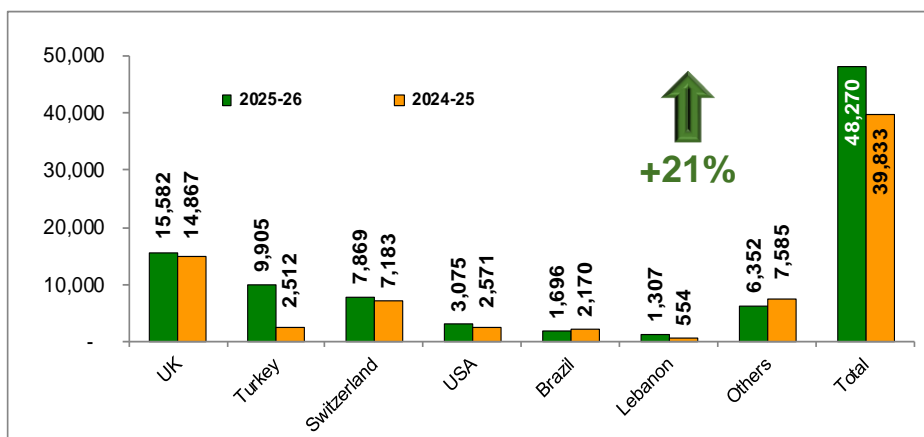
Between September 1st 2025 and December 31 2025, import licences were issued for 71,431 tonnes, in milled rice equivalent, an increase of 11,952 tonnes (+20%) compared with a year ago.

The requests for licences for Indica rice, amounting to 64,454 tonnes, show an increase of 6,136 tonnes (+11%) and represent 90% of the total volume; requests for Japonica rice, amounting to 6,977 tonnes, of which 5,569 tonnes were “round”, 904 tonnes were “medium” and 504 tonnes were “long A”, increased by 5,816 tonnes (+501%).

Export: husked + milled

tonnes in milled rice equivalent

(Source: ENTE RISI Declaration)



During the first four months of the 2025/2026 campaign, exports remained consistently above the level recorded in the previous campaign.

Exports, amounting to 48,270 tonnes of milled rice, increased by 8,437 tonnes (+21%) compared to a year ago.



European Union market

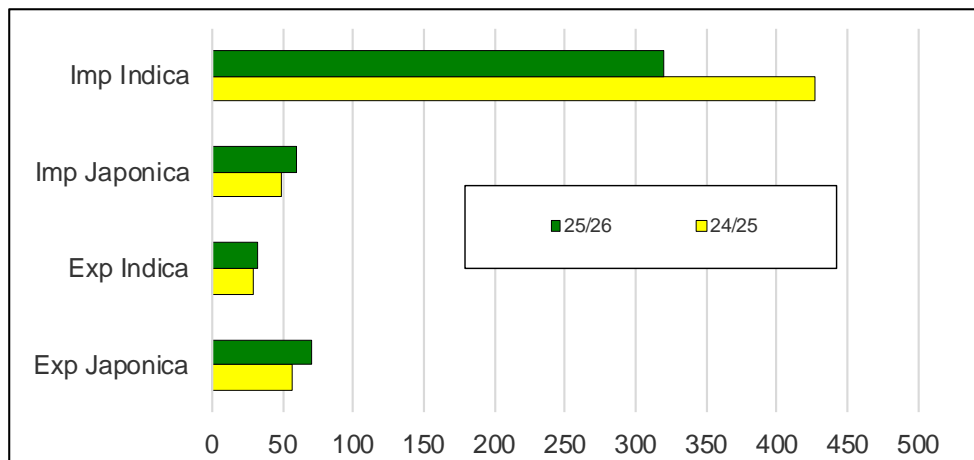
Campaign 2025/2026

From September 1st 2025 to December 31, 2025



Import Export EU

(*'000 tonnes milled rice equivalent*)



As of December 31, 2025, imports – exceeding 379,700 tonnes, in milled rice equivalent – were down by approximately 95,500 tonnes (-20%) compared to the figure recorded on the same date last year.

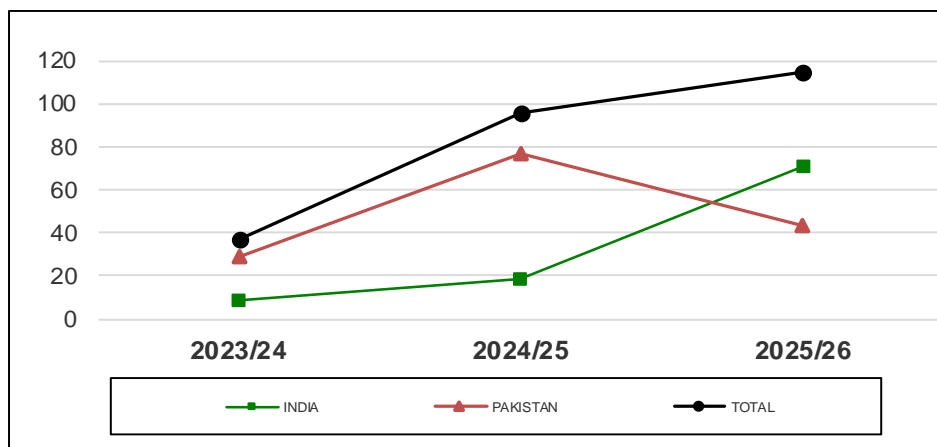
However, as already pointed out in previous issues, the data are incomplete, so we will highlight when the Commission resolves the issue.

Exports to third countries – almost 103,300 tonnes, in milled rice equivalent – show an increase of over 18,100 tonnes (+21%) compared to last season.

Exports of Japonica and Indica rice increased by 26% and 13% respectively.

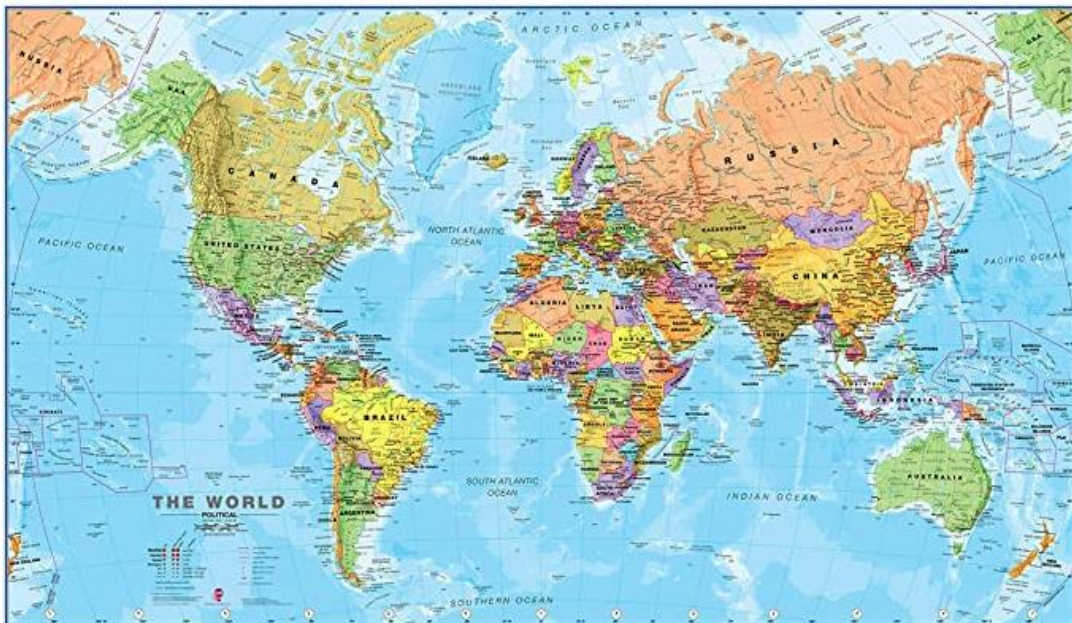
Basmati husked rice imports

(*'000 tonnes*)



Imports of basmati husked rice amounted to approximately 114,800 tonnes, an increase of over 19,000 tonnes (+20%) compared to the previous season.

Volumes from India – exceeding 71,200 tonnes – are up 286%, while those from Pakistan, amounting to approximately 43,600 tonnes, are down 44%.



International markets

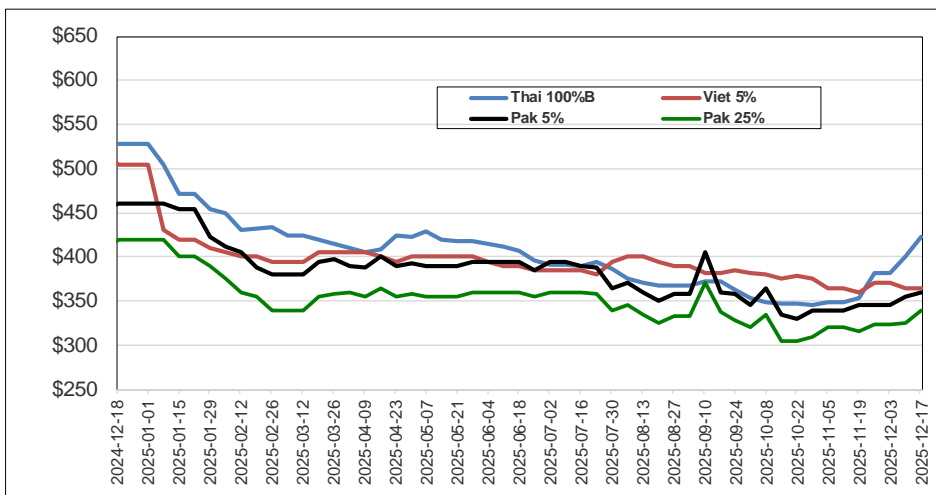
Campaign 2025/2026

From September 1st 2025 to December 17, 2025



International prices

(\$/tonnes)



Weekly prices

Milled rice international FOB quotes		
Exchange rate	€1 = \$1.1684	
Asian Markets	\$/t	€/t
Thai 100%B	400	342
Vietnam 5%	365	312
India 5%	350	300
Pakistan 5%	355	304
Pakistan 25%	325	278
Myanmar 5%	340	291
Pakistan Basmati S. Kernel	1,025	877
Pusa Basmati India	925	792
Other Markets	\$/t	€/t
Uruguay 5%	440	377
Argentina 5%	420	359
Brazil Type 1	430	368
USA LG 2/4% Fob Laredo TX	600	514
California MG 1/4% - Med -	850	727